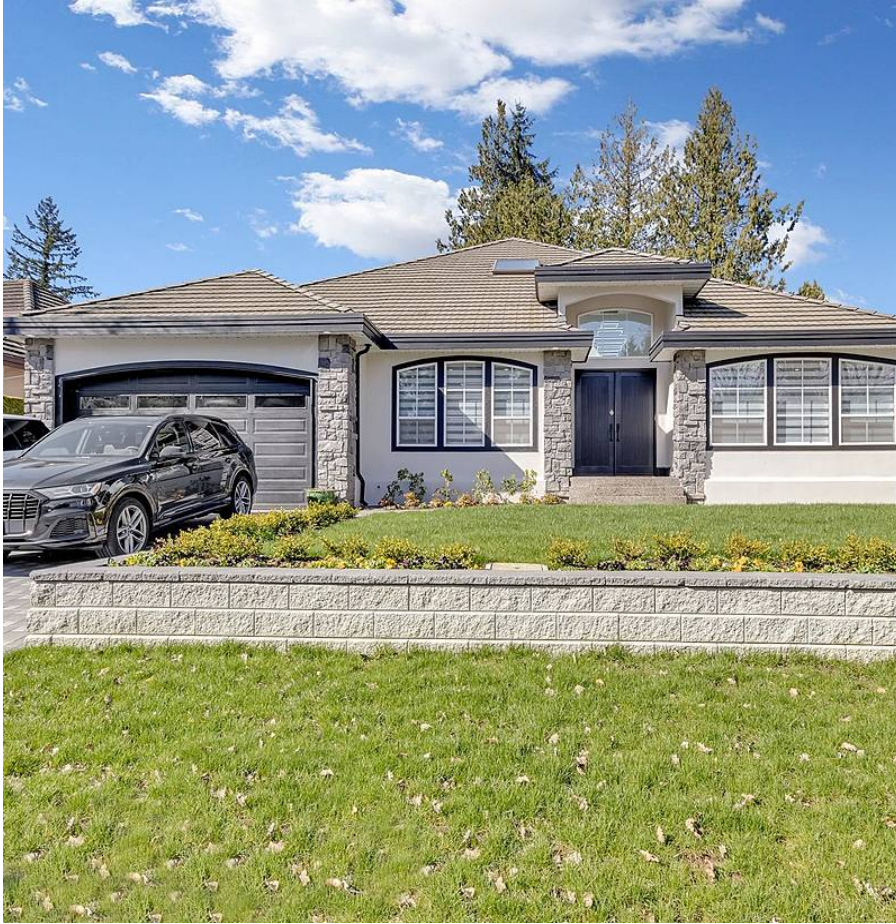


5877 E Kettle Crescent, Surrey

\$2,499,999



Welcome to your Executive Home with approx. 3,200 sq. ft. of living space on a 12,806 sq. ft. lot. in most desirable neighbourhood of Surrey. FULLY RENOVATED with New Chef Inspired Gourmet kitchen, spacious Spice Kitchen. Features include ...new flooring, new appliances, new paint, new quartz countertops, new driveway, freshly painted stucco, A/C unit, new lighting fixtures, security cameras... list is endless! 3 bedrooms on the main including a huge master suite (15' * 25) and ensuite bath, 2 more generous size bedrooms on the upper level. Family room walks out to the private, landscaped southwest facing back yard with stone patio. Within walking distance to parks, both levels of Schools, YMCA, shops at Panorama and all major routes. Beautiful home... Don't miss the opportunity.

KEY INFORMATION

MLS® R2678119

Residential Detached

Sullivan Station

5 Bedrooms

3 Bathrooms

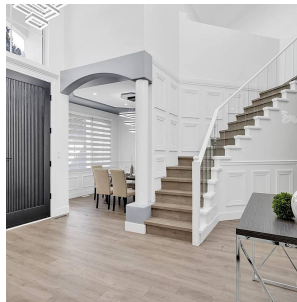
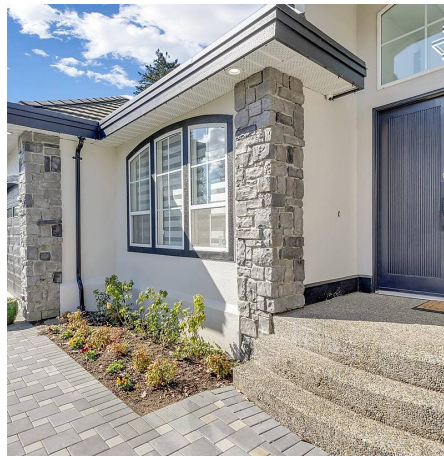
3,160 SF

12,806 SF Lot

FEATURES

Year Built: 1994

Listed By: RE/MAX Bozz Realty



rennie