

16061 92a Avenue, Surrey

\$1,598,000



This lovely home sits on a corner lot boasting an open & functional floorplan. Enter into a living room with a cozy fireplace & spacious dining room. Continue into a new kitchen featuring granite countertops, stainless steel appliances & eating nook. Kitchen opens to a 18' covered patio which makes it easy to BBQ all year round. Unwind in the spacious master bedroom with ensuite bath & walk-in closet. Massive corner lot allows for endless options. Fenced yard has plenty of playing room for kids or pets. Side fence opens to a 40x14ft paved area to fit a RV, boat, trailers, campers, &/or cars. The backyard has planters, chicken coop & shed/workshop, double car garage & the long driveway fit cars & more. Easy access to transportation, parks, shopping & schools.

KEY INFORMATION

MLS® R2678189

Residential Detached

Fleetwood Tynehead

3 Bedrooms

3 Bathrooms

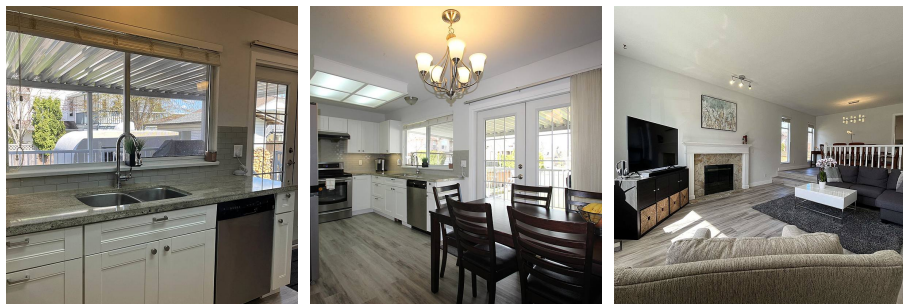
1,900 SF

7,361 SF Lot

FEATURES

Year Built: 1989

Listed By: Coldwell Banker Prestige Realty



rennie