

30 3459 Wilkie Street, Coquitlam

\$999,900



Tatton by Mosaic. This bright and spacious inside unit offers 3 bedrooms and 3 full bathrooms. Located toward the quiet end of the complex facing the peaceful greenbelt with lots of windows allowing plenty of natural light into the home. Open floor plan with a deck that overlooks Victoria Park off the kitchen. 9' ceilings on main, stainless appliances, granite countertops, double sinks in the master ensuite and fenced yard. Updates include fresh paint, new carpet and new kitchen backsplash in 2016. This is truly a beautiful well-loved home in a sought-after neighbourhood at the base of Burke Mountain. Just steps to Leigh Elementary and walking trails and conveniently located near shops, transit and commuting corridors.

KEY INFORMATION

MLS® R2678341

Residential Attached

Burke Mountain

3 Bedrooms

3 Bathrooms

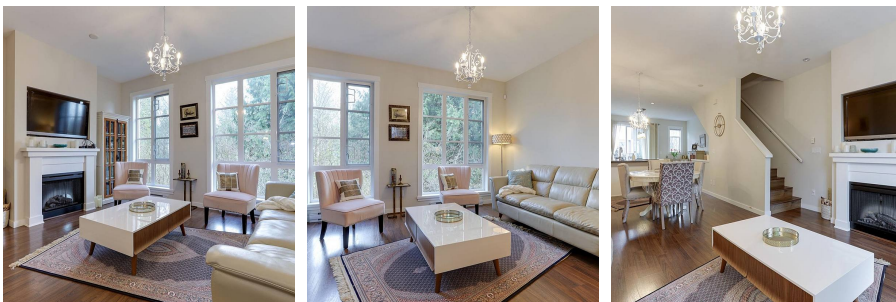
1,383 SF

FEATURES

Year Built: 2010

Views: PARK

Listed By: 88West Realty



rennie