

1203 1408 Strathmore Mews, Vancouver

\$959,000



Welcome to Concord Pacific's West One – Southwest facing corner 1 bedroom + den + flex home. At 727 square feet, your spacious home offers a chef's kitchen with stainless steel appliances, gas cooktop, stone counters, pantry/office area & a proper den with windows perfect for working from home. Plenty of natural light from the floor to ceiling windows with quiet outlooks of the city, the seawall and False Creek. Enjoy the beautiful sunsets and bbqing from your large covered balcony. First class amenities with exclusives access to Club Viva: Swimming pool, hot tub, large gym, squash courts, pool table, meeting rooms, theatre and a guest suite! Bonus: Concierge in the lobby, 1 parking stall & storage locker included.

KEY INFORMATION

MLS® R2678463

Residential Attached

Yaletown

1 Bedroom

1 Bathroom

727 SF

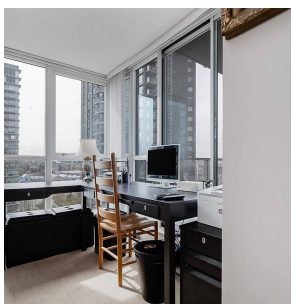
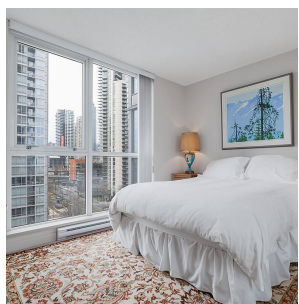
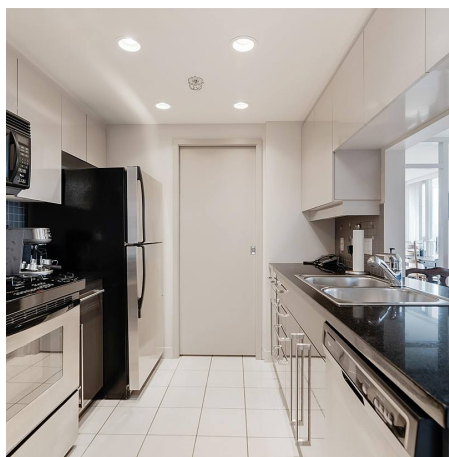
\$409.92 Maintenance Fees

FEATURES

Year Built: 2002

Views: CITY AND WATER VIEWS

Listed By: rennie & associates realty ltd.



Derek Kai PREC*
604.868.1666
dkai@rennie.com
rennie.com/derekkai

rennie