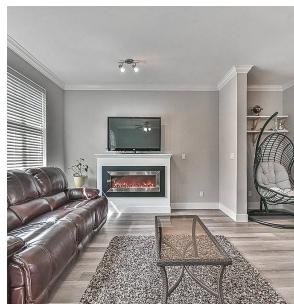
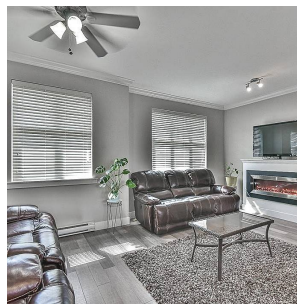
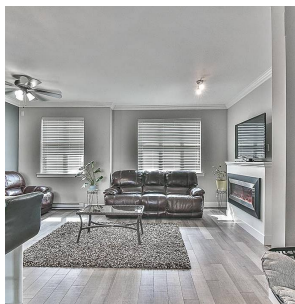


40 6350 142 Street, Surrey

\$939,321



Still available! Buyers move-in ready! Immaculate 4-bedrooms with 4-washrooms Townhouse - in the HEART of Sullivan Station, Surrey! End & Corner Home with TONS of large windows bringing in LOTS natural light! This Family Home has the perfect open floor plan with a North facing balcony directly off the living room with green space - privacy all-year-round! The kitchen features a quartz 9-ft island, stainless steel appliances and lots of cabinets for storage including a self-standing pantry. Plus, a HUGE fenced backyard. McLeod Road Traditional Elementary School is right across the street, plus, Sullivan Centre Plaza at a few mins walk & lots of amenities at a quick hop. This Home-Sweet-Home will not be on for long, call today & book your private appointment today!

KEY INFORMATION

MLS® R2678546

Residential Attached

Sullivan Station

4 Bedrooms

4 Bathrooms

1,736 SF

FEATURES

Year Built: 2015

Listed By: Century 21 AAA Realty Inc.

rennie