

11634 203 Street, Maple Ridge

\$1,298,888



Corner Lot with TWO Driveways. Close to School and Parks. First time Buyers and Developers Alert . Fully renovated rancher .Tons of updates include new floor, doors, washrooms, kitchen, appliances(cooking top, micro, fridge, dishwasher), siding, molding and paint .Meticulously maintained. Own a house for the price of a townhouse with development potential. Property Zoned for townhouses/fourplex/court yard housing. Potential to add a studio suit for mortgage help with minimal cost.. Centrally located near transit (West Coast Express, Bus stop) and shopping. Easy access to Golden Ears bridge and rest of fraser valley.Act now to secure this deal.Open House 01 May from 12 to 3PM

KEY INFORMATION

MLS® R2677651

Residential Detached

Southwest Maple Ridge

3 Bedrooms

2 Bathrooms

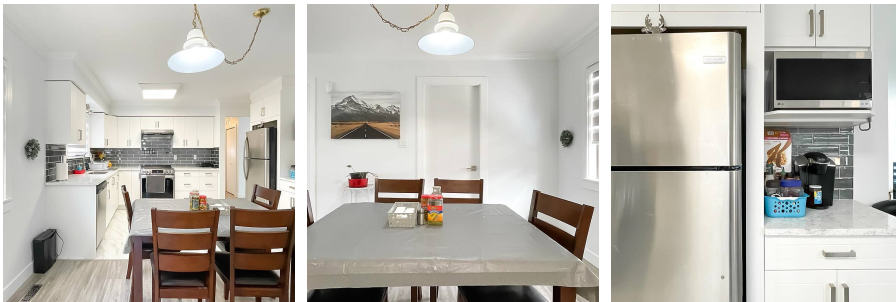
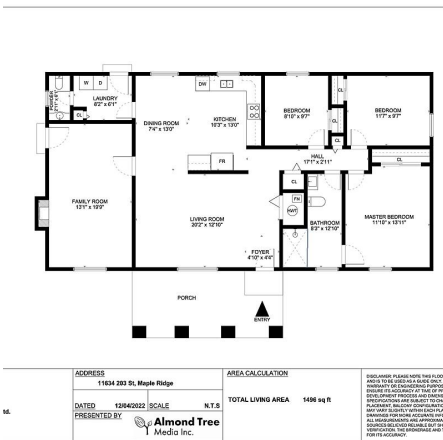
1,496 SF

5,999 SF Lot

FEATURES

Year Built: 1983

Listed By: Century 21 Coastal Realty Ltd.



rennie