

6060 Marine Drive, Burnaby

\$2,288,000



Central location. Public transit, schools (Glenwood Elementary, Byrne Creek Secondary) nearby. Surrounded by amenities: Market Crossing Mall, Marine Way & Big Bend Market, Byrne Creek Ravine Park, Riverway Golf Course. Enjoy both metropolitan glamour & leisurely country life here. Large 12105 sf duplex lot. Renovated in 2018. Roof in 2015. Qty 7 bed plus 2 den house with seasonal fruits & flowers in the south facing backyard. Ground-level basement suite/separate entrance, rental income about \$2500. Soothing view. Future city development projects (townhouses) will be located at 6199-6253 Marine Drive. A 3.8 acre Honda dealership located at 5744 Byrne Rd is steps away. 2 shopping center on 5820 Marine Dr. 5813 Byrne Rd will be completed in 2024. Don't miss this goldmine! Motivated Seller.

KEY INFORMATION

MLS® R2678025

Residential Detached

Big Bend

7 Bedrooms

4 Bathrooms

3,960 SF

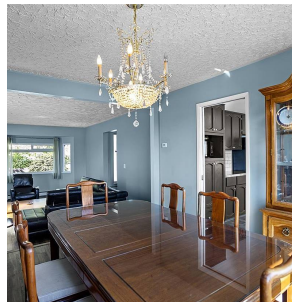
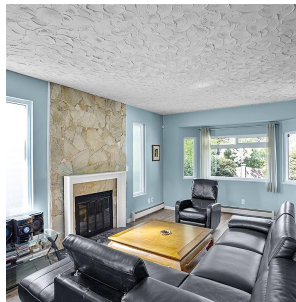
12,015 SF Lot

FEATURES

Year Built: 1980

Views: FARM

Listed By: Sutton Centre Realty



rennie