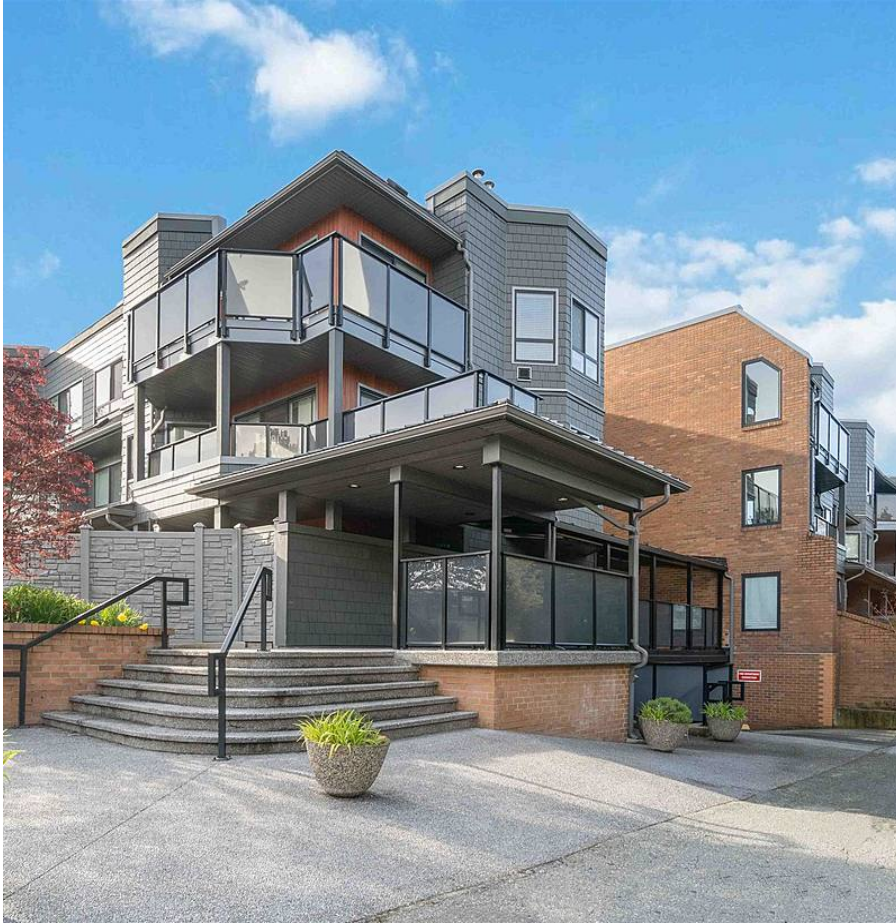


209 1830 E Southmere Crescent, Surrey

\$649,000



Location!!! Location!!! Location!!! 20 mins walk or 4 mins drive to Marine Dr, White Rock. This 2 bed 2 bath unit offers brand new fireplace, new lighting fixtures, shower glass door, updated kitchen & much more. This unit has radiant baseboard heaters and best the part is that it is included in the Strata fee. Strata has a lot of ongoing upgrades which are already paid for via special levy which include new windows, sliding patio door, decks & exterior cladding. 1 underground parking and 1 storage locker on the same Level. No age restrictions. Steps to town center, transport, Starbucks, Save On Food and library. Mins to the beach, Hospital and US border. School Catchment: H.T Thrift Elementary and Semiahmoo Secondary.

KEY INFORMATION

MLS® R2677631

Residential Attached

Sunnyside Park

2 Bedrooms

2 Bathrooms

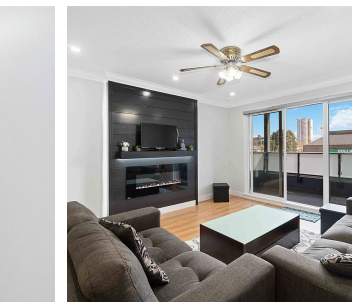
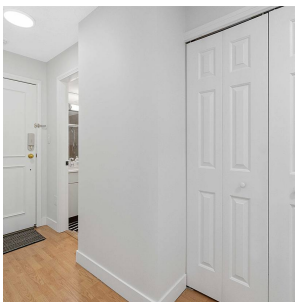
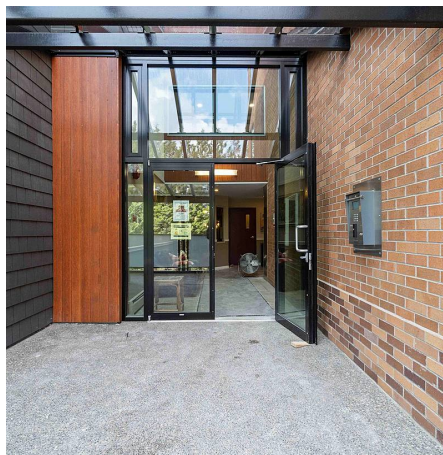
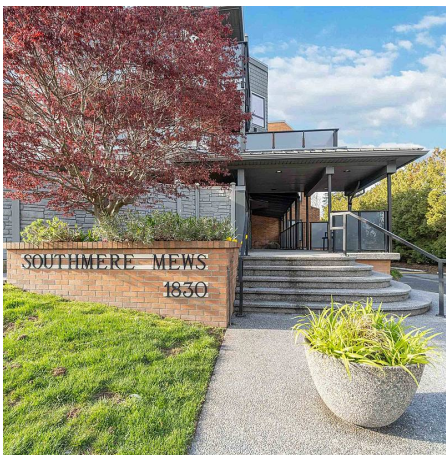
985 SF

\$484.00 Maintenance Fees

FEATURES

Year Built: 1987

Listed By: RE/MAX Little Oak Realty (Abbotsford)



rennie