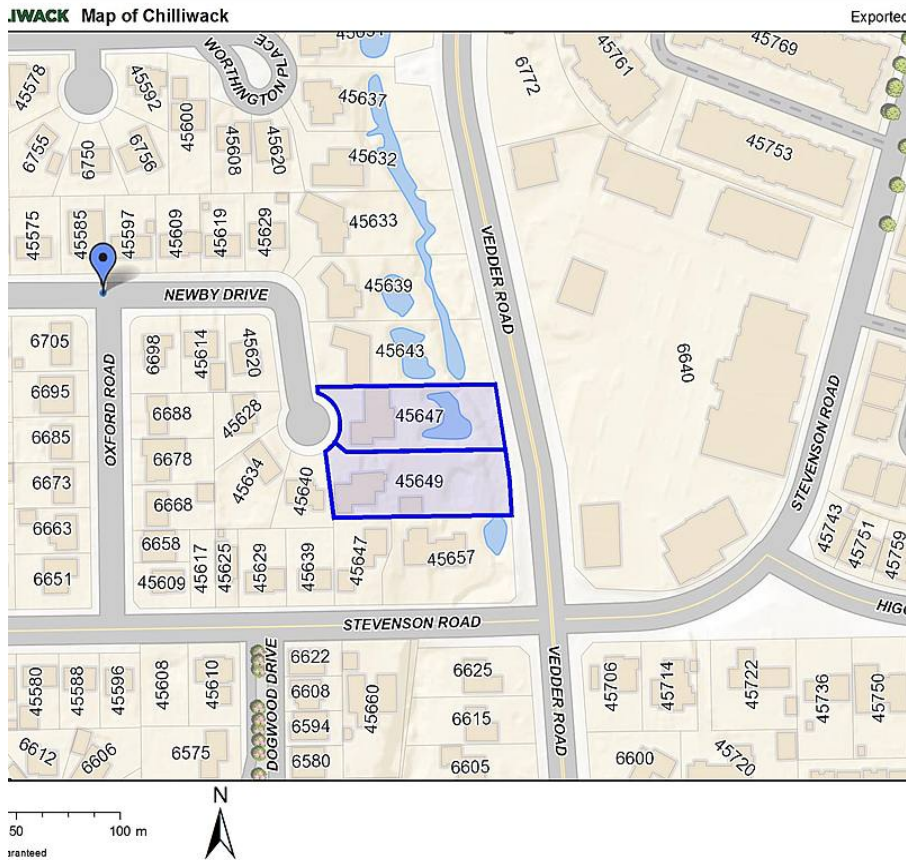


# 45647 Newby Drive, Chilliwack

\$2,800,000



**INVESTOR ALERT! LOCATION LOCATION LOCATION!** Land assembly: must be sold in conjunction with 45649 Newby Drive. Total of 1.26 acres combined!! This prime piece of land has amazing potential in a can't beat location. This Sardis dream is located within walking distance to all levels of schooling, shopping, dining and entertainment. Only a short drive to Cultus Lake and the Vedder Rotary Trail! This neighborhood offers fantastic holding value- or potential for building a highly desirable development. **CALL TODAY** to book a viewing and for more information!

### KEY INFORMATION

MLS® R2678937

Residential Detached

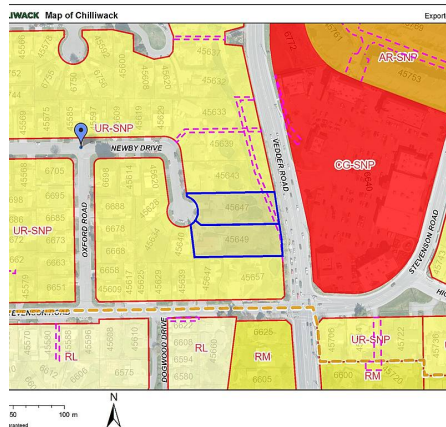
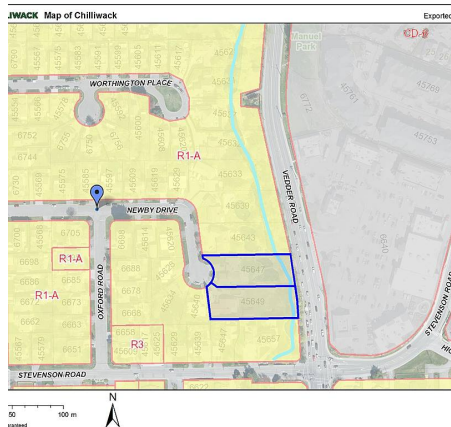
Chilliwack

4 Bedrooms

3 Bathrooms

4,382 SF

26,136 SF Lot



### FEATURES

Year Built: 1977

Views: MOUNTAIN

Listed By: Century 21 Creekside Realty (Luckakuck)