

# 1103 1045 Quayside Drive, New Westminster

\$789,900



Welcome to this 2 bed 2 bath southwest facing home in a prime location! Enjoy the incredible views of the river and mountains from the floor to ceiling windows. The living room has a cozy gas fireplace and hardwood floors that run throughout the main living room area. There is also an extra large master bedroom with a ensuite that has a soaker tub. Step out onto the huge balcony to take in the fresh air and enjoy the stunning views. Building includes great amenities including indoor pool, hot tub, Gym, Sauna, roof deck and club house. Don't miss out on this incredible opportunity!

## KEY INFORMATION

MLS® R2678899

Residential Attached

Quay

2 Bedrooms

2 Bathrooms

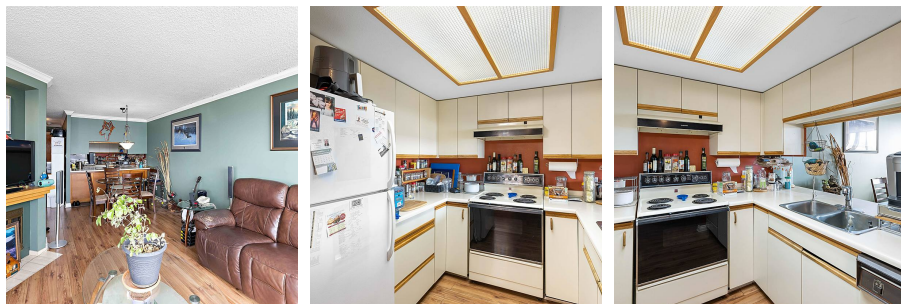
1,065 SF

\$486.09 Maintenance Fees

## FEATURES

Year Built: 1988

Listed By: Stonehaus Realty Corp.



rennie