

338a 2036 London Drive, Whistler

\$479,000



Ski and bike off the Dave Murray downhill straight onto your deck at this private 3-bedroom, 3-bathroom condo in Legends. Located at the end of the building looking up the ski hill, this quiet unit offers space, privacy, and a view up the ski hill. Legends amenities include 2 hot tubs, a year-round outdoor pool, games/media room, fitness centre, owner ski lockers, and underground parking. Strata fees include all utilities, property taxes, TW fees, and maintenance. Situated right at the bottom of Dave Murray Olympic Downhill and within close walking distance to shops, restaurants, the valley trail, Alpha Lake, and Nita Lake. This quarter share property allows you to spend a week every month at the property or place it in the rental pool to earn revenue for the weeks you aren't using it.

KEY INFORMATION

MLS® R2678978

Residential Attached

Whistler Creek

3 Bedrooms

2 Bathrooms

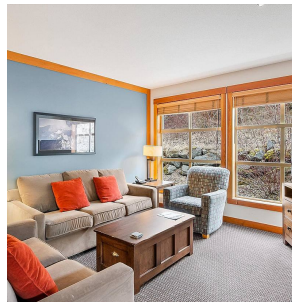
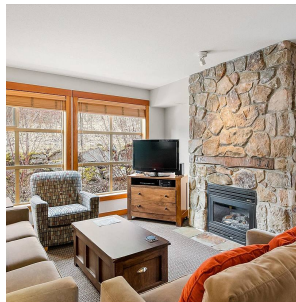
1,246 SF

\$816.68 Maintenance Fees

FEATURES

Year Built: 2001

Listed By: Whistler Real Estate Company Limited



rennie