

2803 23061 Lougheed Highway, Maple Ridge

\$884,900



You're greeted by a wide open concept floor plan on the main floor with bright windows allowing for tons of natural light. Enjoy your morning coffee or your evening bbq out on the balcony which overlooks the beautiful and private greenbelt. Upstairs boasts 3 bedrooms including the master with a spa like ensuite. Private backyard off the garage is great for the kids and pets and has access to the greenway walking trail right from your yard. Double car garage with space for storage. Gorgeous residents-only clubhouse with resort-style amenities and an outdoor pool. Walking to Kanaka Creek trails, parks and elementary school, Thomas Haney Secondary, bus routes and amenities. Short driving distance to West Coast Express, commuting routes and downtown. Come enjoy what Provenance has to offer!

KEY INFORMATION

MLS® R2679426

Residential Attached

East Central Maple Ridge

3 Bedrooms

3 Bathrooms

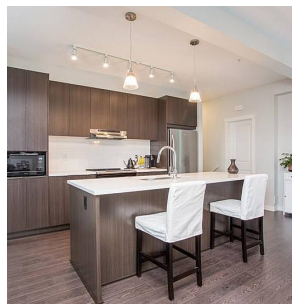
1,281 SF

FEATURES

Year Built: 2021

Views: Greenbelt

Listed By: 2 Percent Realty West Coast



rennie