

15952 Russell Avenue, White Rock

\$2,499,900



ATT ALL BUILDERS & DEVELOPERS ! One of the last large WR corner lots in the OCP that allows MULTI-UNIT RESIDENTIAL uses in townhouses and low-rise buildings(max 4 storey building). This desirable 12,000+ sq ft corner lot offers a wonderful sunny southern exposed rear garden, a single car port with driveway & a well cared for 4 bdrm home occupied by it's original owner.The 2480 sq ft solid home features 3 bedrooms on upper level with bright,open living area & south facing deck off the kitchen/eating area.Ideal location; next to a commercial property with convenience store, transit & within blocks to beach, Peace Arch French immersion & Earl Marriot Schools, hospital & easy access to hwy 99 & US border. Build, subdivide or rent...this property has incredible potential !

KEY INFORMATION

MLS® R2678316

Residential Detached

White Rock

4 Bedrooms

2 Bathrooms

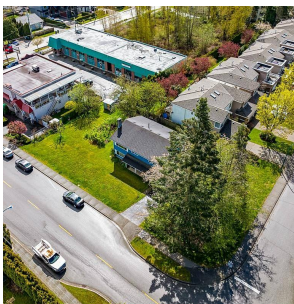
2,270 SF

12,024 SF Lot

FEATURES

Year Built: 1967

Listed By: RE/MAX Colonial Pacific Realty



rennie