

# 58 2888 156 Street, Surrey

\$1,180,000



WELCOME to HYDE PARK - A 2016 award winning community in South Surrey! This meticulous & impressive 3 bedroom & 3 bathroom townhome is like new & is HIGHLIGHTED by your south facing fenced back yard that overlooks a beautiful complex PARK with trails. The unit has an open plan concept with 9 foot ceilings & powder room on the main floor. Beautifully appointed kitchen with built in pantry, GAS RANGE, S/S appliances & quartz counters. An extra-wide living area comfortably welcomes full size furniture, includes a built-in server & custom entertainment wall with a fireplace. Comes with a double tandem garage & the potential of lots of storage. Located in the school catchment for Southridge private school & Semiahmoo secondary! Walking distance to Morgan Crossing Shops & Restaurants.

## KEY INFORMATION

MLS® R2678401

Residential Attached

Grandview Surrey

3 Bedrooms

3 Bathrooms

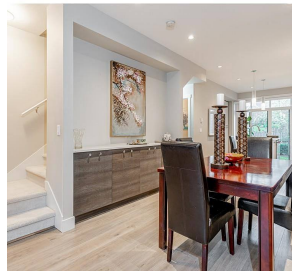
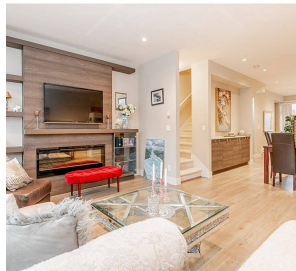
1,377 SF

## FEATURES

Year Built: 2016

Views: Park

Listed By: Royal LePage Northstar Realty (S. Surrey)



rennie