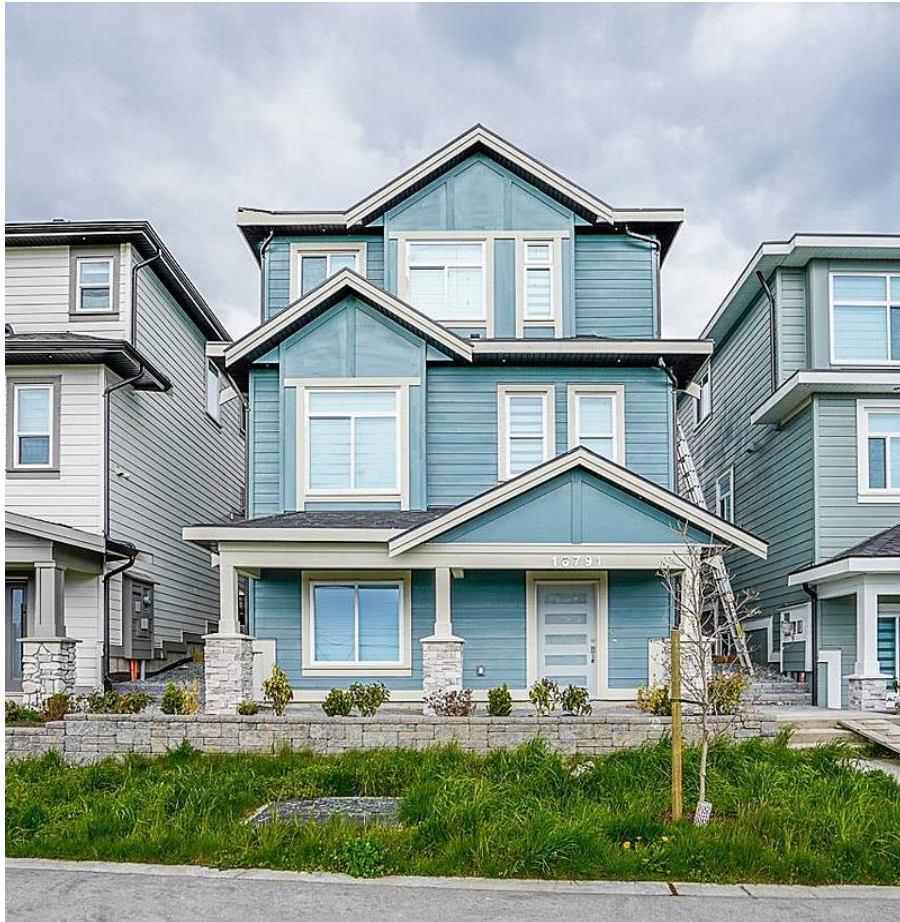


16791 16 Avenue, Surrey

\$1,949,999



Welcome to your new home in Grandview Heights. This home has a large open floor plan, a wet bar, air conditioning and is loaded with extra features. You will find 3 large bedrooms upstairs, with a big master bedroom with an ensuite. The main floor is open concept with patio doors that open to your back yard. Lots of sunlight in these south facing homes. There is also a den which can be used as an office on the main floor. Below you will find a two bedroom legal suite and an extra bedroom with closet which can be used as a media room as well! 3 car parking! Minutes to highway, new school coming, shopping and restaurants are 5 minutes away... this home has it all. Price includes GST.

KEY INFORMATION

MLS® R2679313

Residential Detached

Pacific Douglas

6 Bedrooms

4 Bathrooms

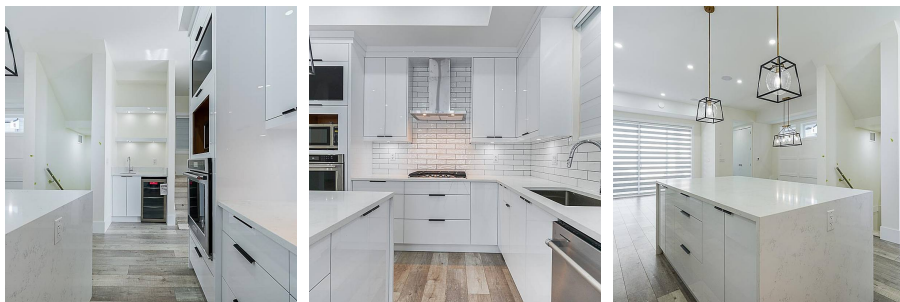
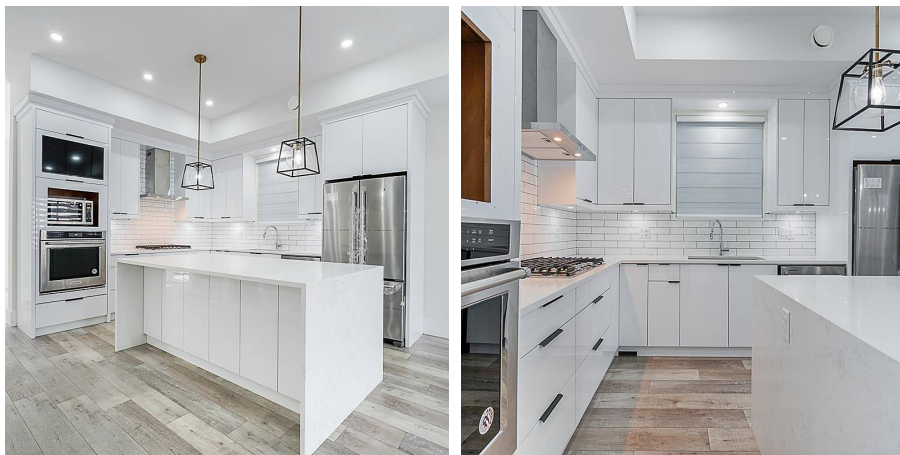
2,866 SF

3,958 SF Lot

FEATURES

Year Built: 2022

Listed By: RE/MAX Blueprint Realty



rennie