

2803 9887 Whalley Boulevard, Surrey

\$799,900



Welcome to Park Boulevard, the most desirable location in the heart of Surrey! This brand new gorgeous eastern exposure 2 Bed 2 Bath on 28th floor boasts unobstructed panoramic city and mountain Views! It features open plan layouts, Air Conditioning, floor to ceiling windows, quartz counters, Stainless Steel Bosch appliances, engineered hardwood flooring and a large balcony. Resort - style Amenities include 24/7 concierge, fitness center, indoor pool, sauna room, hot tub, badminton court etc. Work from home without a hassle, with the on-site business centre. Walking distance to King George skytrain station, T&T Market, Holland Park, SFU Surrey Campus, Memorial Hospital, City Hall, library, local restaurants & much more! Pet friendly and rentals allowed. 1 indoor garage parking included.

KEY INFORMATION

MLS® R2679159

Residential Attached

Whalley

2 Bedrooms

2 Bathrooms

737 SF

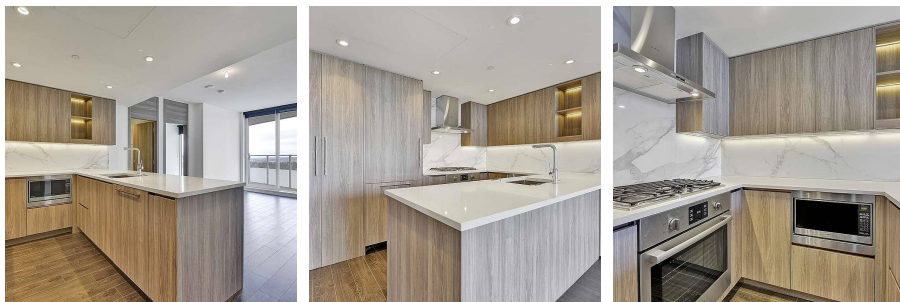
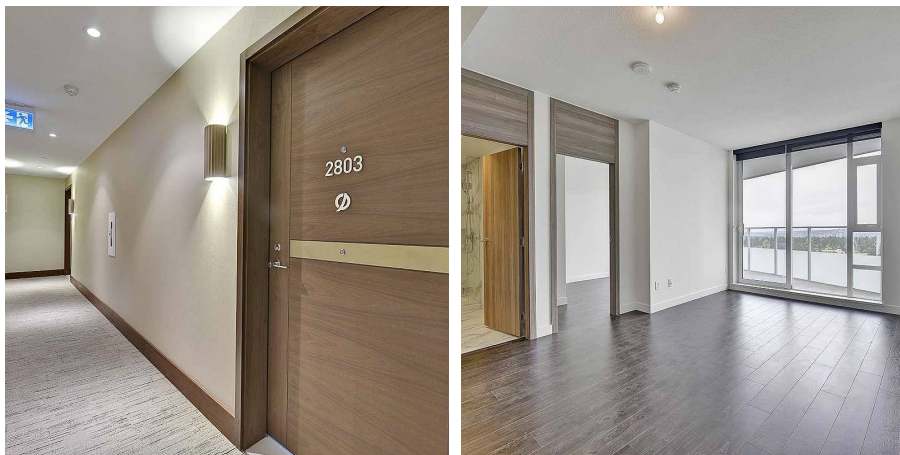
\$417.42 Maintenance Fees

FEATURES

Year Built: 2021

Views: Holland Park

Listed By: Homelife Benchmark Titus Realty



rennie