

401 37841 Cleveland Avenue, Squamish

\$559,000



This could very well be the best unit in the Studio SQ complex. The views are unparalleled and the large rooftop deck is anyone's dream come true. The south facing outdoor space offers an unobstructed view of the Stawamus Chief, Marina, and Howe Sound. The home features high ceilings, southwest facing windows, in-suite laundry, semi ensuite bathroom, and unique storage space underneath the rooftop staircase. This 33 unit complex located in the heart of the Sea to Sky Corridor is a great opportunity for first time home buyers or an investment property. Just steps from the historic Howe Sound Brew Pub, local Farmers Market, and walking distance from all downtown amenities. This move-in ready home will be sure to give you the ultimate Squamish living experience!

KEY INFORMATION

MLS® R2679773

Residential Attached

Downtown Squamish

1 Bedroom

1 Bathroom

646 SF

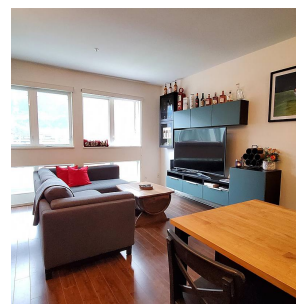
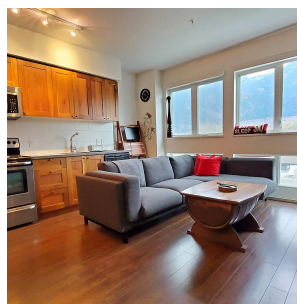
\$358.19 Maintenance Fees

FEATURES

Year Built: 2011

Views: Mountains, Chief, Howe Sound

Listed By: Macdonald Realty



rennie