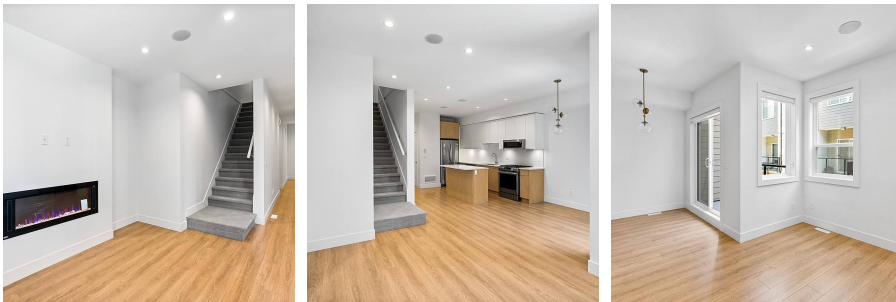


7 8140 166 Street, Surrey

\$899,900



The PRIDE OF FLEETWOOD! Mortise Group presents NOVA - A newly constructed, luxurious & centrally located 3 Bed & 3 Bath corner townhome! Only steps away from transit, schools, shopping, Fleetwood rec-centre & the recently announced skytrain line! This quality built & modern home features an open concept & spacious living space, designer kitchen w/ premium stainless steel appliances, forced-Air heating, gas stove, high 9' ceilings, central A/C & a large + private backyard. Quick access to HWY 1, HWY 15 & Fraser HWY! 7000 sq. ft. Amenity Building under construction which includes an on-site daycare, Zen garden and much more!

KEY INFORMATION

MLS® R2679221
Residential Attached
Fleetwood Tynehead
3 Bedrooms
3 Bathrooms
1,488 SF

FEATURES

Year Built: 2020
Listed By: Sutton Group-West Coast Realty (Surrey/120)

rennie