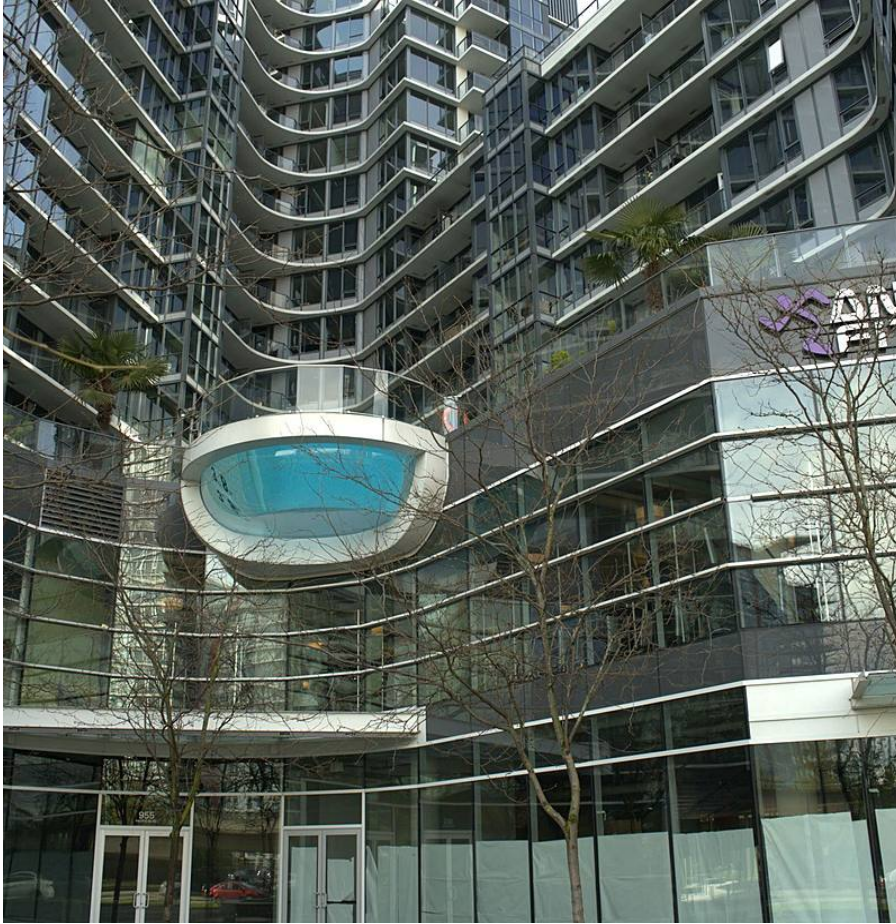


306 68 Smithe Street, Vancouver

\$800,000



One Pacific. View of False Creek and water. Nice deck with water surrounding. Next to PARQ Vancouver Casino Resort Hotel. 24 hrs Concierge, Sky garden rooftop dining terrace. North east facing. Air conditioning with one bedroom, den and flex room. Engineering laminate and marble flooring, quartz stone countertop, roller shades etc.

KEY INFORMATION

MLS® R2678772

Residential Attached

Yaletown

1 Bedroom

1 Bathroom

560 SF

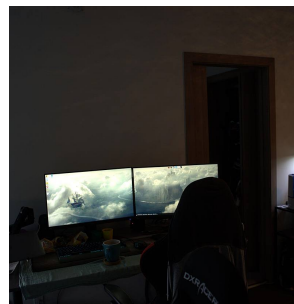
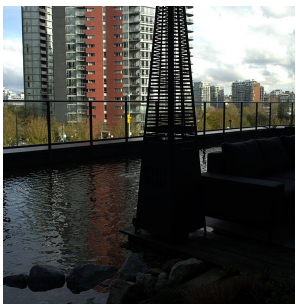
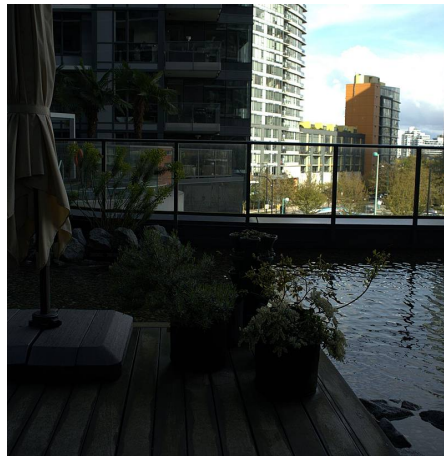
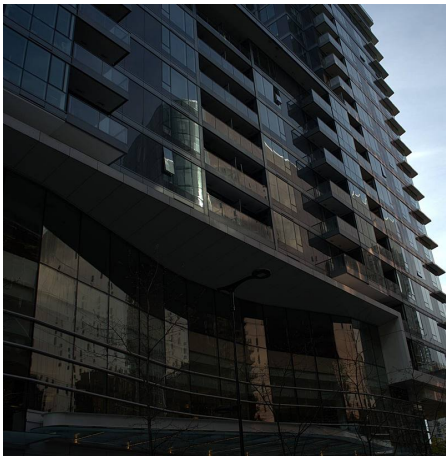
\$0.00 Maintenance Fees

FEATURES

Year Built: 2016

Views: DECK VIEW

Listed By: Macdonald Realty Westmar



rennie