

2705 4458 Beresford Street, Burnaby

\$1,368,800



Welcome to brand new Suntower 1 unit by belford properties. This three-bedroom and two bathroom unit with pretty good mountain, city views. Word class amenities include an indoor swimming-pool, hot tub, badminton court, golf simulator, gym, party room, study room, music room, sky garden, hotel-style lobby, concierge service, and montessori daycare. Location in the heart of metrotown in Burnaby, steps to skytrain station, shopping center, crystal mall, restaurants, and entertainments. Parking #61 Storage P3-05#27 Bicycle storage P1u-07#5

KEY INFORMATION

MLS® R2679980

Residential Attached

Metrotown

3 Bedrooms

2 Bathrooms

1,048 SF

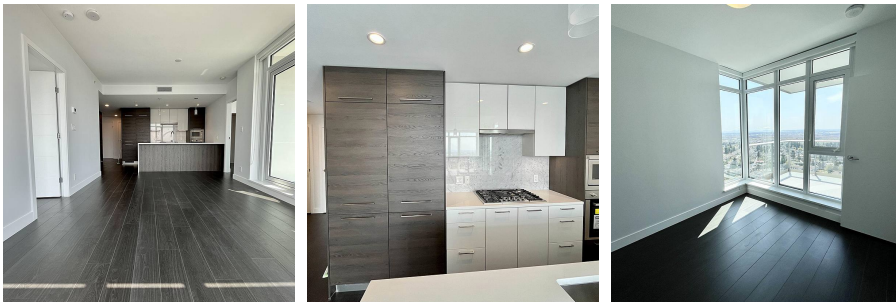
\$588.58 Maintenance Fees

FEATURES

Year Built: 2021

Views: City, Mountain view

Listed By: Royal Pacific Realty Corp.



rennie