

# 210 6991 Victoria Drive, Vancouver

\$649,000



210 - 6991 Victoria Drive, Vancouver, BC. V5P-3Y7. Victoria Park located less than a kilometer to primary and secondary schools. Great family friendly neighbourhood with easy access to transportation and green spaces. This two bedroom two bathroom has great value for entry level small families or couples. Comfortable open plan with access to a large terrace (18X18) off the livingroom and on the quiet side of the building which serves as another room during summer months. One parking stall and one storage locker. Sorry no pets.

## KEY INFORMATION

MLS® R2680180

Residential Attached

Killarney

2 Bedrooms

2 Bathrooms

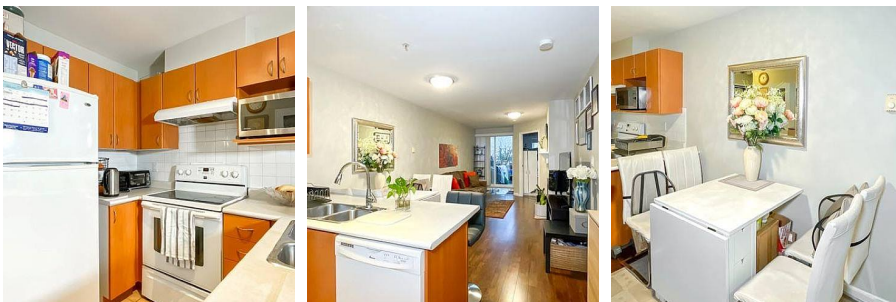
822 SF

\$327.00 Maintenance Fees

## FEATURES

Year Built: 1999

Listed By: Century 21 In Town Realty



rennie