

2901 13438 Central Avenue, Surrey

\$399,000



Unbeatable price and location! This 29th floor studio with a view has a highly efficient layout which maximizes functionality. Enjoy premium fixtures like hardwood flooring and a pull-down Murphy bed with attached dining table and finishes that showcase a commitment to design and detail which enhances the livability of this cozy abode. Includes all the amenities you can ask for: business centre, lounge, gym, yoga studio, study and music room, children's play area, roof top garden and concierge services. Relish in being just steps away from Surrey Central Skytrain, SFU Surrey, T&T supermarket, shopping and restaurants. Comes with 1 locker, no parking.

KEY INFORMATION

MLS® R2679900

Residential Attached

Whalley

0 Bedrooms

1 Bathroom

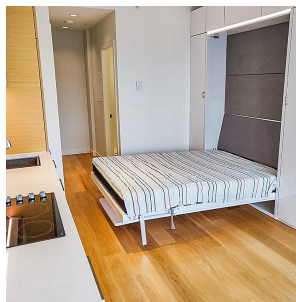
297 SF

\$172.47 Maintenance Fees

FEATURES

Year Built: 2019

Listed By: Royal Pacific Tri-Cities Realty



rennie