

52 19255 Aloha Drive, Surrey

\$1,049,000



Family oriented neighbourhood! SE facing bright corner 3 Bed + Flex with 3 Bath unit. Master bedroom en-suite on the corner side & All brs are roomy. Bigger patio.Tons of natural light. S/S Kitchen Appliances, Quartz C/T. *OVER \$9,000 OF CUSTOM BUILT WALL CABINET.* Good neighbourhood to live in or invest. Natural gas range & bbq hook-up. Guest Suite, Club House. Everything close by - Clayton Community Center, Montessori Daycare, Brightpath Clayton Hills for Kids, minutes to Ambros Plaza, Willowbrook shopping, T&T. Schools - Hazelgrove, Madaugh, Regent Road Elementary / Clayton Heights Seco & Ecole Salish secondary. Parks - Clayton Park, Hazelgrove Park EV roughed-in side by side double garage, Energuide certified, pre-wired Smart Entry System & autonomous garage system & much more.

KEY INFORMATION

MLS® R2680456

Residential Attached

Clayton

3 Bedrooms

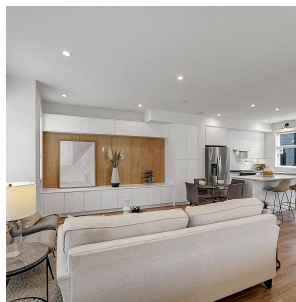
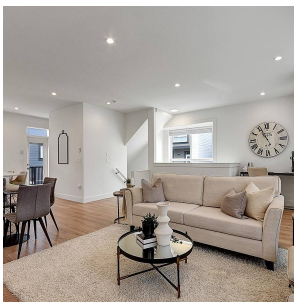
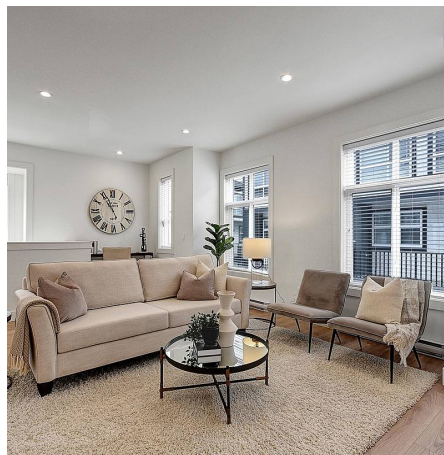
3 Bathrooms

1,690 SF

FEATURES

Year Built: 2021

Listed By: Sutton Group - 1st West Realty



rennie