

# 38 31032 Westridge Place, Abbotsford

\$768,000



Welcome to this beautiful end unit home in Westerleigh! This bright and open concept two bed & two bath home has been immaculately kept and upgraded! The entertainer's kitchen features granite countertops, a large island with breakfast bar, & sleek SS appliances that leads right out to your patio for BBQing! Upstairs you will find 2 LRG and bright bedrooms, the master with its own ensuite and newer luxury carpet throughout. The living room opens to the front fenced yard with access to street parking & where turf has been installed for ease of use and curb appeal. In the garage you will find 2 car parking and work area. Residents can take advantage of membership to CLUB WEST, a resort-style private clubhouse with outdoor pool, fitness studio, fireside lounge, hockey room and theatre!

## KEY INFORMATION

MLS® R2679474

Residential Attached

Abbotsford West

2 Bedrooms

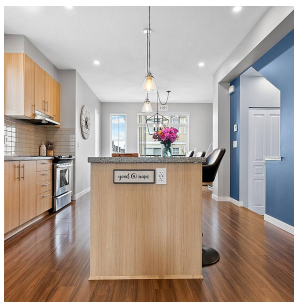
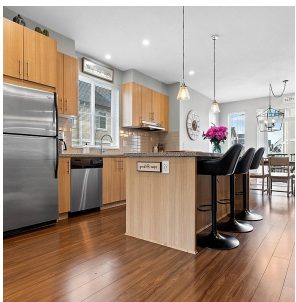
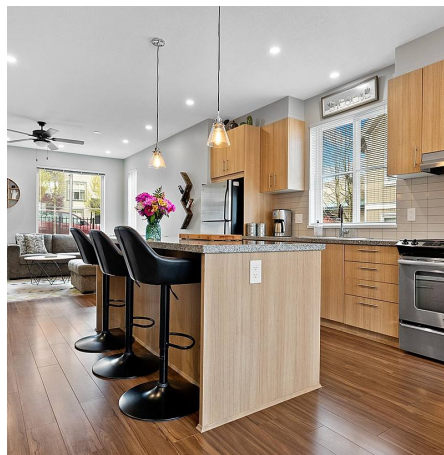
2 Bathrooms

1,349 SF

## FEATURES

Year Built: 2013

Listed By: RE/MAX Little Oak Realty (Abbotsford)



rennie