

# P102 2138 Madison Avenue, Burnaby

\$959,000



One of-a kind, private HUGE garden patio, very spacious, well-kept. This is a beautiful quiet home 1372sq.ft. west facing, with huge 2 bedrooms/2 bathrooms, with ceiling heights soaring to 9'8" throughout most of the home. You have plenty of space to entertain both inside and out. Bedrooms are huge, easy to become bedroom with a home office. Huge walk-in closet which like a size of a Den! Huge laundry room which you can put your freezer in it! Large storage locker in P3 Level. Walking distance to Brentwood & Gilmore Skytrain Station. Close to All The Amazing Brentwood(TAB) facilities. Daycare Centre & many schools nearby. HUGE CRF Fund & LOW monthly strata fees. \*this unit is close to Wheelchair accessible entrance. \*Reserve Fund close to \$3 million.

## KEY INFORMATION

MLS® R2680528

Residential Attached

Brentwood Park

2 Bedrooms

2 Bathrooms

1,372 SF

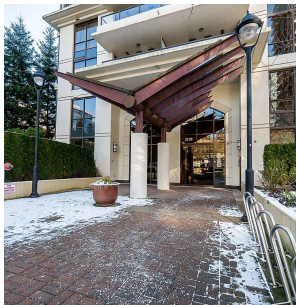
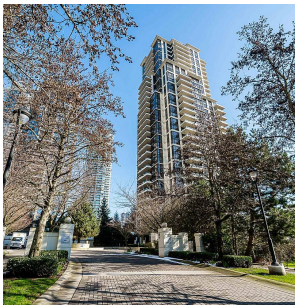
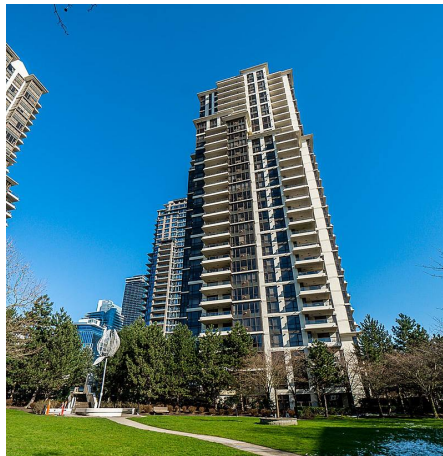
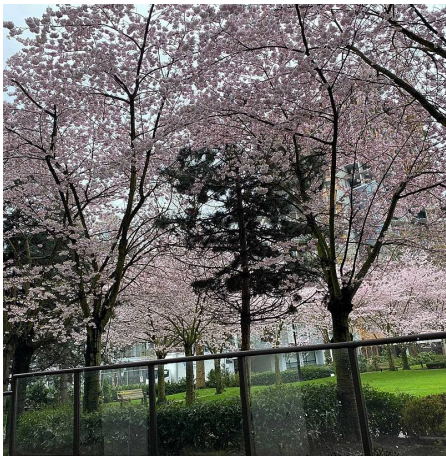
\$489.37 Maintenance Fees

## FEATURES

Year Built: 2006

Views: GARDEN

Listed By: Interlink Realty



rennie