

11390 Loughren Drive, Surrey

\$1,699,000



5 Bedroom, 3 Bathroom Home on a private lot on a very quite dead end street, stone throw away from the Port Mann with easy access to Vancouver and Fraser valley. Single car garage with access to the rear yard for more toy storage and lots of parking !! Bachelor suite rented for \$800/month. Potential rent of 2000/month from basement. Option to convert basement into extra large 2 bedroom suite or one bedroom suite + bachelor suite to increase revenue potential. Big front yard and large rear yard is your urban oasis, wrapped in trees and hedges for a private camp like setting!! viewing by appointment.

KEY INFORMATION

MLS® R2680500

Residential Detached

Bolivar Heights

5 Bedrooms

3 Bathrooms

2,246 SF

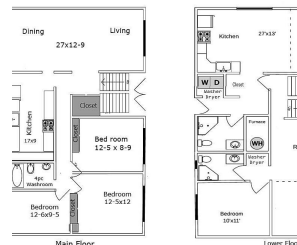
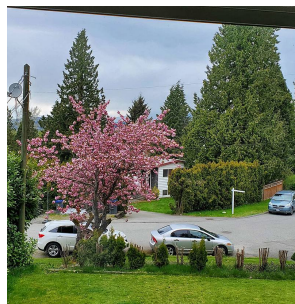
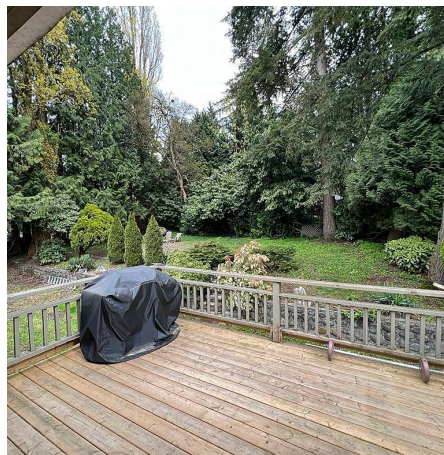
11,834 SF Lot

FEATURES

Year Built: 1965

Views: PORT MANN BRIDGE AND BEYOND

Listed By: Century 21 Supreme Realty Inc.



**All measurements approximate Floor plan not to scale. Buyers to verify if deemed important.

rennie