

15 16488 64 Avenue, Surrey

\$1,050,000



Welcome to HARVEST at BOSE FARMS. This incredible CORNER 3 bed 2.5 bath home is situated in the heart of Cloverdale in a highly sought after development. This home features an open style floor plan w/ 9 ft ceilings throughout on the main level, a beautiful chef's dream kitchen, boasting ss kitchen appliances and an oversized island with a gas range built in, room for bar stools, an undermount sink and a customized bar pantry. Have your guests come over to enjoy a BBQ off the private patio/ deck setup with upgraded built in speaker sound systems throughout the entire home. Relax in your master with a ton of natural light flowing through, featuring the gorgeous vaulted ceilings, & double sinks in ensuite & shower. Also included is the tankless hot water system in your 2 car garage.

KEY INFORMATION

MLS® R2681046

Residential Attached

Cloverdale

3 Bedrooms

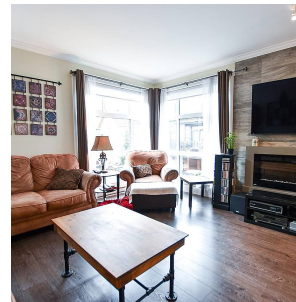
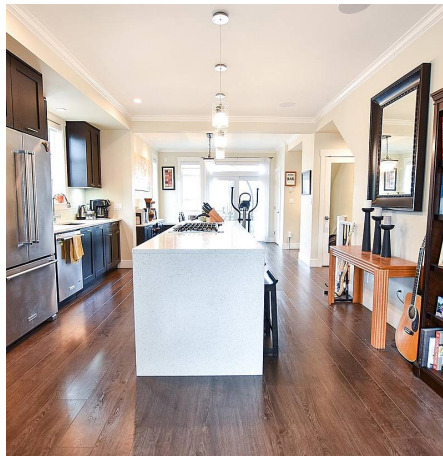
3 Bathrooms

1,518 SF

FEATURES

Year Built: 2016

Listed By: Oakwyn Realty Northwest



rennie