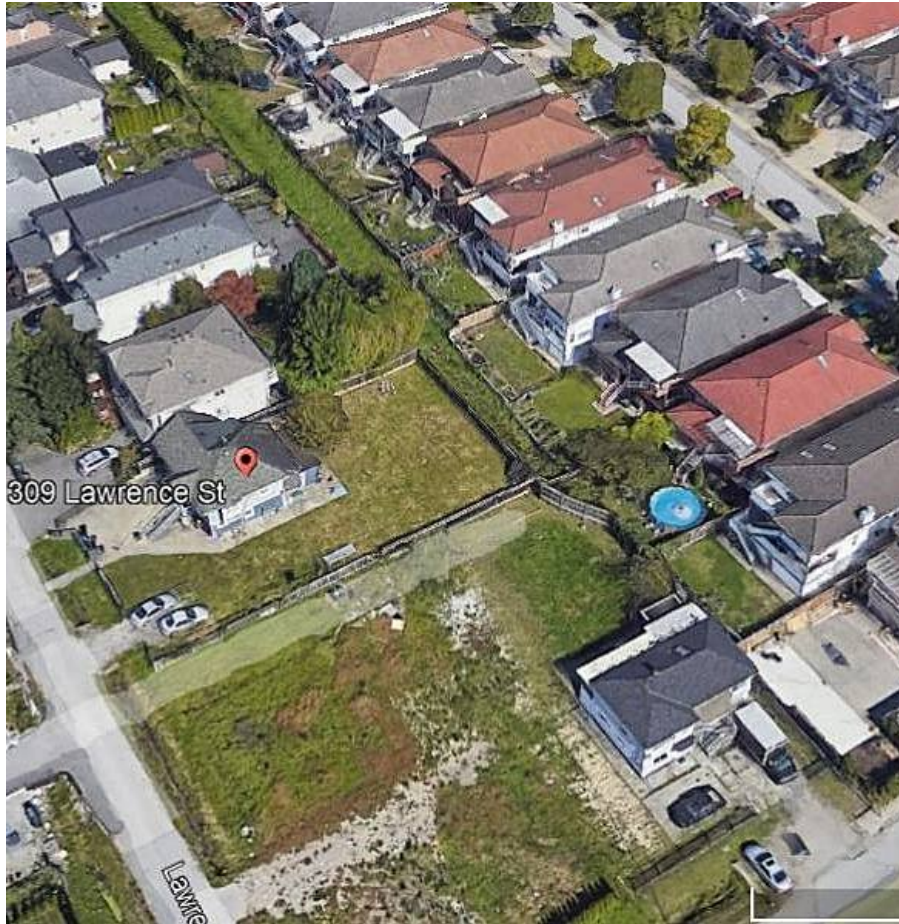


309 Lawrence Street, New Westminster

\$1,388,000



Great opportunity for Builders here as City has confirmed subdivision in principal. RQ -1 zoning and Million Dollar homes surround this location - so much potential. Parks, Schools, shopping and Transit so accessible. Long term tenants make this a great holding property pending eventual subdivision. DO NOT DISTURB TENANTS.

KEY INFORMATION

MLS® R2680967

Residential Detached

Queensborough

3 Bedrooms

2 Bathrooms

1,789 SF

8,595 SF Lot

FEATURES

Year Built: 1922

Listed By: Sutton Group-West Coast Realty