

1903 Lilac Drive, Surrey

\$799,000



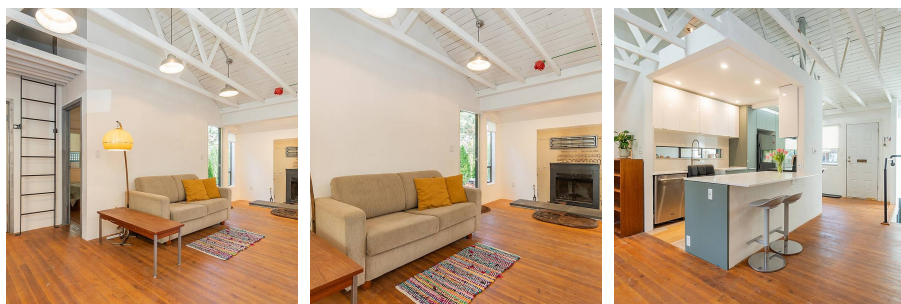
Welcome to Alderwood III. Rarely available Rancher with basement end unit. No neighbours sharing walls, attached by double carport. Features 2 Bedrooms on the main floor including Master and 1 Bedroom below, cozy fireplace, lots of storage, vaulted ceiling in Living Room and updated Kitchen. Very private patio and outdoor area. Hard to find 4 parking with this unit in White Rock/South Surrey. Excellent walkability. School catchment: Earl Marriott Secondary & Jessie Lee Elementary.

KEY INFORMATION

MLS® R2680223
Residential Attached
King George Corridor
3 Bedrooms
2 Bathrooms
2,084 SF

FEATURES

Year Built: 1979
Listed By: Homelife Benchmark Realty Corp.
(White Rock)



rennie