

702 290 Newport Drive, Port Moody

\$848,000



Beautifully designed home at the Sentinel in Newport Village now available! Well maintained building with Facing NE but wonderfully bright unit. This amazing corner unit offers 2 bedrooms and 2 bathrooms with mountain view, Installed engineered hardwood floors throughout and new painting in 2021. It is conveniently located to library, restaurants, shops, recreation centre and skytrain station. Call before it's gone!

KEY INFORMATION

MLS® R2681164

Residential Attached

North Shore Port Moody

2 Bedrooms

2 Bathrooms

1,103 SF

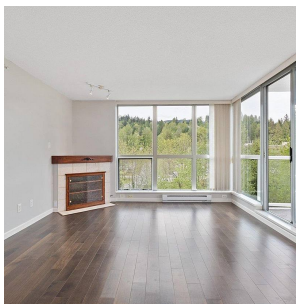
\$398.48 Maintenance Fees

FEATURES

Year Built: 2006

Views: Mountain

Listed By: Evergreen West Realty



rennie