

72 14655 32 Avenue, Surrey

\$1,448,000



ELGIN POINTE - Premier Gated Community!
Stunning Duplex-Style 2,695sf, 4bd/4ba
Townhome. Enter into the welcoming great rm
plan w/ lrg bright windows filling lvg spaces w/
light, soaring vaulted ceilings, gas f/p & gorgeous
cherry wood flrs. Beautifully appointed kitchen w/
top end s/s appl's, stone cntrs, eat-up bar, wlk-in
pantry & plenty of rich maple cabinetry. Spacious
dining area opening out to lrg, bkyd w/ covered
patio. Up; 2 ensuited bdrms incl, Mstr bd w/ lux
ensuite. Down; Rec rm w/ gas f/p & 2 add'l
generous bdrms & bath. Plenty of storage
throughout! Prkg for 4 w/ Dbl gar. Newer HW
tank, carpet, paint, kitch & lndry appl's, Wizard
screens & custom kitch pull-outs. Quick access to
Hwy 99, White Rock & Cres Beach. Wlk to shops,
trails, schools & transit. Call Today!

KEY INFORMATION

MLS® R2679859

Residential Attached

Elgin Chantrell

4 Bedrooms

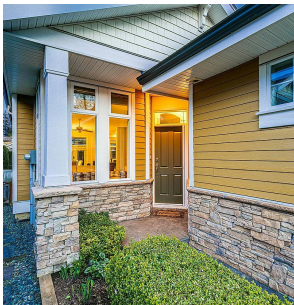
4 Bathrooms

2,695 SF

FEATURES

Year Built: 2007

Listed By: Sutton Group-West Coast Realty
(Surrey/24)



rennie