

55 15151 34 Avenue, Surrey

\$999,000



Welcome to Soreno in South Surrey. This award winning development features 3 Bedrooms/3 Baths. Large 1500sqft floorplan features 9' ceiling, open design main floor with formal Dining & Living room, New floor & paint, cozy Gas fireplace in Family room opens to a private entertainment sized patio. Stainless steel appliances, gas stove, updated flooring, updated bathrooms. Well maintained complex situated in one of the best areas in South Surrey. Book your showings now!

KEY INFORMATION

MLS® R2680488

Residential Attached

Morgan Creek

3 Bedrooms

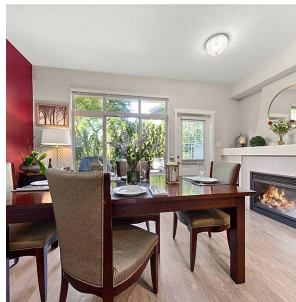
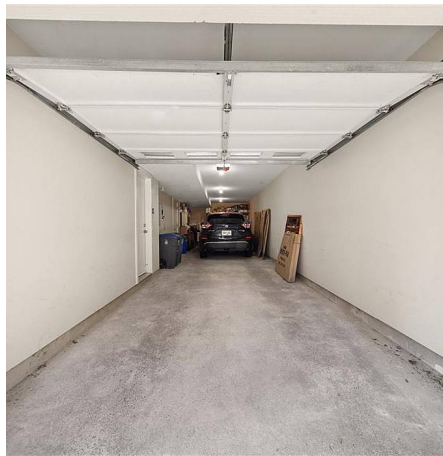
3 Bathrooms

1,503 SF

FEATURES

Year Built: 2006

Listed By: Royal LePage - Wolstencroft



rennie