

305 31831 Peardonville Road, Abbotsford

\$495,500



This beautiful condo is perfect for first-time buyers and investors. It's centrally located in Abbotsford, with schools, shopping, and transit nearby. The condo has been freshly painted and comes with stainless steel appliances and an open concept floor plan. The rooms are big and the natural light is amazing. Plus, it's in a well-managed building that allows rentals. Don't miss this opportunity - call today for a showing!

KEY INFORMATION

MLS® R2681794

Residential Attached

Abbotsford West

2 Bedrooms

2 Bathrooms

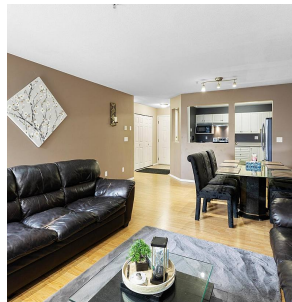
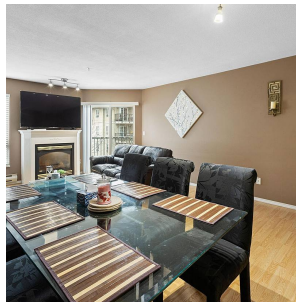
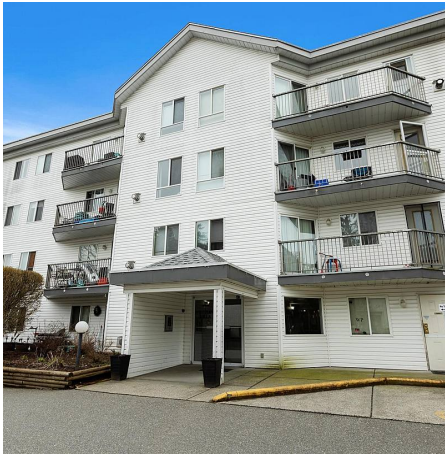
1,043 SF

\$342.00 Maintenance Fees

FEATURES

Year Built: 1994

Listed By: Stonehaus Realty Corp.



rennie