

324 9847 Manchester Drive, Burnaby

\$559,000



Spacious and bright 2 bedroom / 1 bathroom unit is located in prime location only steps from Lougheed Skytrain Station. Features generous sized bedrooms, convenient in-suite storage, dining area, huge living room and massive west facing balcony. Barclay Woods has a proactive strata with recent updates to the lobby and new balconies. 1 Parking (stall# 392). New laminate floor on bedrooms and livingrooms and new appliance including refrigerator and stove and new kitchen cabinets. Located only a short commute to SFU, close to schools, parks, recreation, Lougheed Mall & Costco with easy access to Highway #1.

KEY INFORMATION

MLS® R2682005

Residential Attached

Sullivan Heights

2 Bedrooms

1 Bathroom

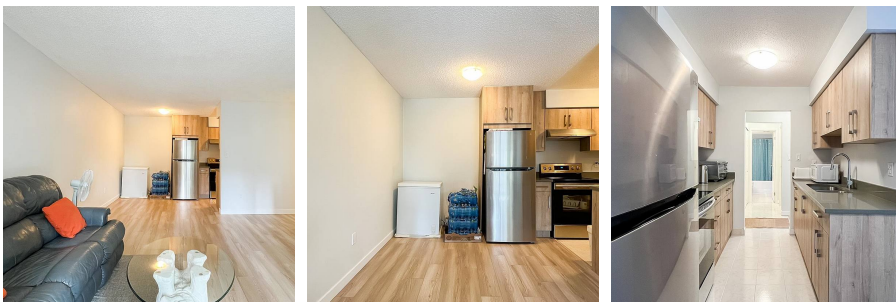
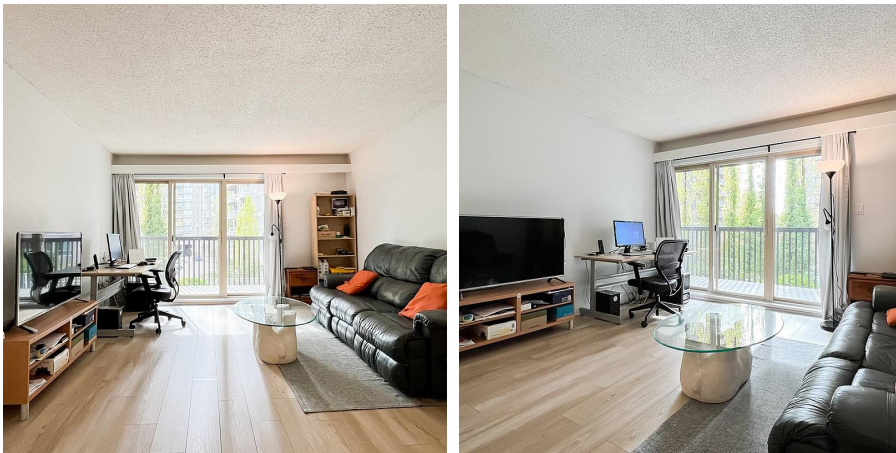
877 SF

\$461.25 Maintenance Fees

FEATURES

Year Built: 1980

Listed By: Royal First Realty



rennie