

# 33 6195 168 Street, Surrey

\$1,489,999



Welcome to Poet's Trail. This beautiful 3,346 sqft detached strata home situated in the heart of Cloverdale is one of a kind. The main floor boasts an immaculate chef's kitchen with all stainless steel appliances, granite countertops and open concept living and dining. Upstairs features 4 bedrooms with a large master bedroom, en suite bathroom and sizeable walk in closet. Walk downstairs to a fully finished and renovated 2 bedroom basement suite. Includes a sizeable kitchen with an island. Side by side double garage and fully fenced backyard. \$497.35 a month strata fee which includes house insurance, yard maintenance, garbage, sewer and water. Central location, located near schools, parks, restaurants, and minutes away from Northview Golf & Country Club and Cloverdale Recreation Centre.

## KEY INFORMATION

MLS® R2681072

Residential Detached

Cloverdale

6 Bedrooms

4 Bathrooms

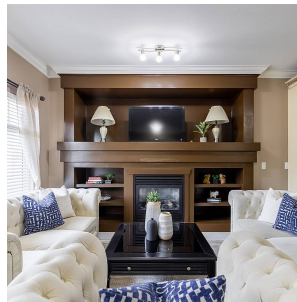
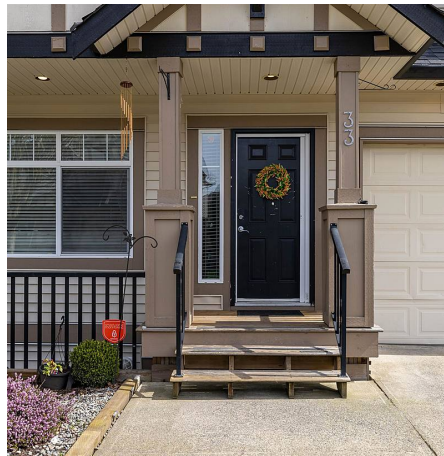
3,346 SF

1 SF Lot

## FEATURES

Year Built: 2005

Listed By: Royal LePage - Wolstencroft



rennie