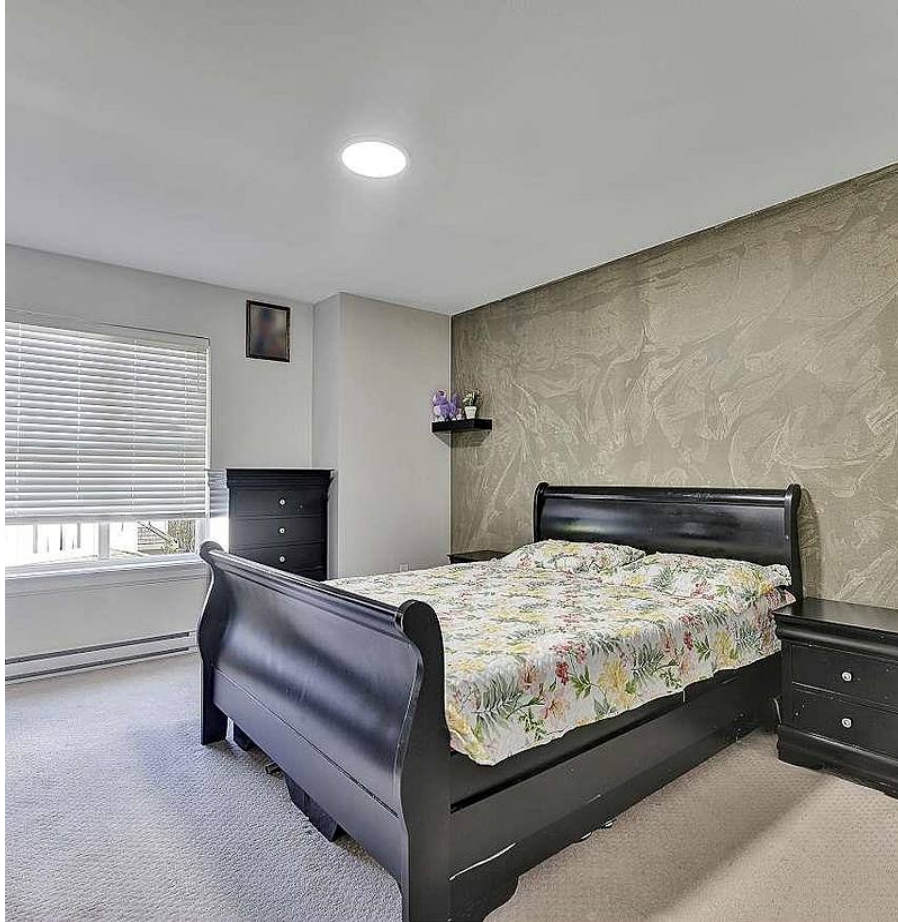


12 14450 68 Avenue, Surrey

\$1,049,000



Fall in love with this contemporary 4BR 3.5BTH East Newton duplex townhouse. The well kept like new home welcomes you with brand new rich, hardwood-style laminate flooring flowing throughout the main beneath bright, oversized windows. Prepare gourmet meals in your modern kitchen on premium stainless steel appliances & sleek quartz countertops with extra hutch. Enjoy al fresco meals on your large deck or weekend bbqs in the spacious back yard. Stacking Whirlpool washer & dryer is conveniently found alongside 4 cozy bedrooms with master offering a walk in closet & spa-like en suite. Perfectly situated, your Springs Heights unit with tandem garage is steps to Georges Vanier Elementary & Hazelnut Meadows Park. Costco, Newton Exchange & Frank Hurt Secondary are within a few short blocks.

KEY INFORMATION

MLS® R2680874

Residential Detached

East Newton

4 Bedrooms

4 Bathrooms

1,727 SF

FEATURES

Year Built: 2016

Listed By: Royal LePage Global Force Realty

