

# 303 3150 Gladwin Road, Abbotsford

\$498,900



Welcome to the Regency Towers, a 35 plus adult building, features included 1147 sq.ft of living space, overlooking the courtyard/fountains, this beautifully well-kept unit feels like you're walking into a home, large windows throughout with a beautiful view from each one, good size living room/dining room combination, well-kept kitchen with beautiful oak cabinets, white appliances, newer fridge & microwave/hood fan, kitchen will also fit a small breakfast table. A huge master bedroom that will accommodate a KS bed, & the 2nd bedroom is very spacious, both bathrooms have had some updating done & painted in neutral colors throughout. You will love the resort-style amenities this complex has to offer, an indoor pool, exercise room, games room & a workshop, & walking distance to shopping.

## KEY INFORMATION

MLS® R2681269

Residential Attached

Central Abbotsford

2 Bedrooms

2 Bathrooms

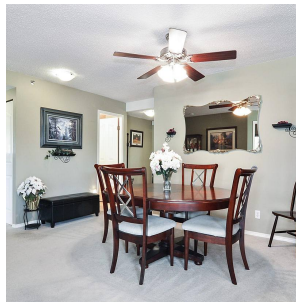
1,147 SF

\$359.87 Maintenance Fees

## FEATURES

Year Built: 1990

Listed By: RE/MAX Little Oak Realty (Fort Langley)



rennie