

# 12 9055 Dayton Avenue, Richmond

\$2,669,420



Kingsland is Richmond's most luxurious and desirable community of 3&4 bedrooms single family home project, situated on a private 2.2acre residential setting, located 5 min from Richmond Centre. Yamamoto Architecture has designed warm, West Coast modern living spaces with unrivalled attention to detail and craftsmanship. The air conditioned interiors feature porcelain and hardwood flooring, European cabinetry by GAMADECOR and gourmet kitchen spaces customized with appliances by Wolf and SubZero, with radiant heating, Central Vacuum, Concrete slab, HRV, Built-in wine-fridge, Alarm system, security cameras, exterior sprinkler system, hotel like ensuite, etc. Access to the Clubhouse, a 3500sf amenity facility equipped with a lounge, fitness centre, chef kitchen, karaoke, theatre and game room.

## KEY INFORMATION

MLS® R2682135

Residential Detached

Garden City

3 Bedrooms

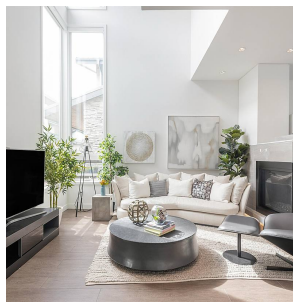
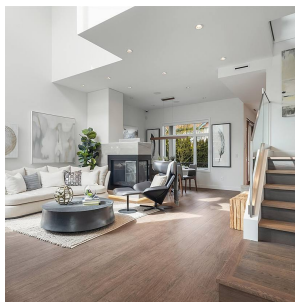
4 Bathrooms

2,534 SF

## FEATURES

Year Built: 2017

Listed By: Royal Pacific Realty Corp.



rennie