

201 15268 105 Avenue, Surrey

\$599,000



Location, Location.. Location !!!! Walk to anywhere you wish! Shopping, recreation, transit, easy Hwy access, this home is perfect for YOU !! Well loved by its current home owner, be prepared to walk into this unit and not want to leave, the ambiance and tranquility is amazing. Tons of windows let in ample natural light, yet privacy is at its best here ! Modern renovations just completed in 2021, with beautiful laminate flooring and a grey/white colour scheme that makes it feel new! Wonderful floor plan, with large bedrooms, new carpet, newer appliances, large closets, in suite laundry, etc.. Enjoy your summer days on the Gorgeous wrap around balcony, with peak-a-boo mountain views. A pleasure to show, Open May 1st, 2-4pm, see YOU there !

KEY INFORMATION

MLS® R2681379

Residential Attached

Guildford

2 Bedrooms

2 Bathrooms

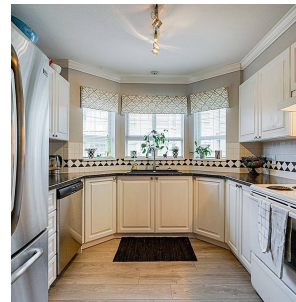
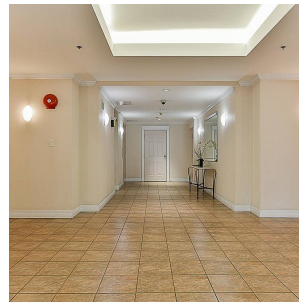
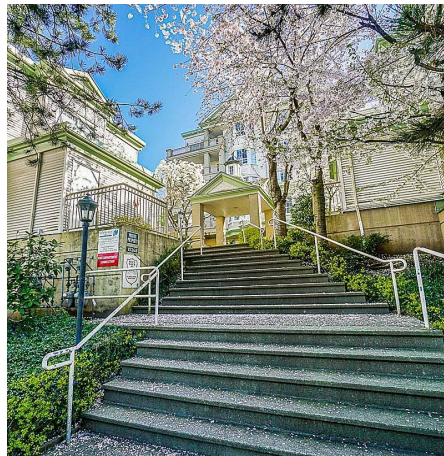
1,041 SF

\$403.93 Maintenance Fees

FEATURES

Year Built: 1996

Listed By: Royal LePage - Wolstencroft



rennie