

# 32516 Oriole Crescent, Abbotsford

\$1,050,000



Who wants to live by GREEN space?!?! 4 bedroom 3 level split home backing Oriole PARK!!! Open concept main floor! HEATED tile in the kitchen and dining area. Updated Kitchen with tons of cabinets! Thermo vinyl windows. Wood burning fireplace. 2 Great storage rooms. 200 amp service. Doggie door! Back yard is newly FENCED and has a 10' x 22' covered PARTY deck!! Garden boxes + a shed + a Monkey Tree!! 11' x 17' Quonset storage. Did I mention it backs a park with playground!! Walk to all levels of schools and shopping!! Central yet shhhhhhh so QUIET!! Come see it!!

## KEY INFORMATION

MLS® R2681586

Residential Detached

Abbotsford West

4 Bedrooms

2 Bathrooms

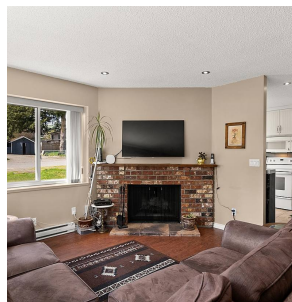
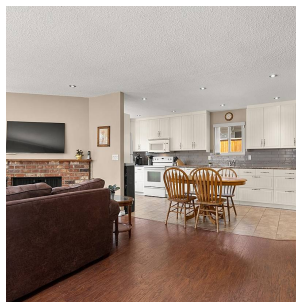
1,641 SF

4,353 SF Lot

## FEATURES

Year Built: 1977

Listed By: eXp Realty (Branch)



rennie