

29 46000 Thomas Road, Chilliwack

\$749,900



TWO BDRM RANCHER in the centrally located gated complex of Halycon Meadows! Open concept floor plan with oversized living area, dining & office space. Kitchen w/ oak cabinets, large island, pull outs in pantry, white appliances & tiled back splash. Spacious master w/ walk in closet & 3 pc ensuite. Laundry room with white cabinets & sink! This home has been EXTREMELY well maintained with many practical upgrades. Built in Vac, easy access water shut off valves, standby generator in garage, Fresh paint in and out! ENTIRE Garden replaced w/ beautiful low maintenance plants. This home is a 10/10! 45+ adult complex w/ clubhouse, guest suite & RV parking. Centrally located close to shopping with plenty of recreation nearby including tennis, walking trails, fishing & Vedder River!

KEY INFORMATION

MLS® R2682281

Residential Detached

Chilliwack

2 Bedrooms

2 Bathrooms

1,306 SF

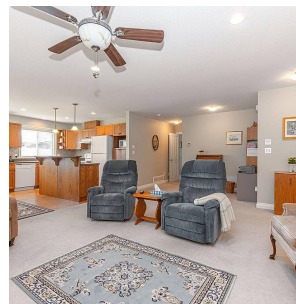
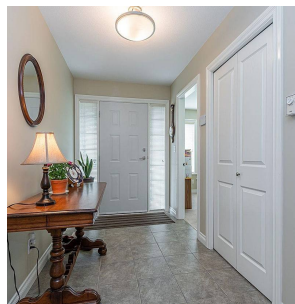
4,101 SF Lot

FEATURES

Year Built: 2005

Views: mountains

Listed By: Century 21 Creekside Realty (Luckakuck)



rennie