

# 415 3638 Vanness Avenue, Vancouver

\$749,990



BRIO by Bosa, low-rise concrete building, conveniently located near Joyce skytrain station, bus #28 in front, surrounded by great public amenities, and it's in close proximity to Metrotown. Building is well cared of by the friendly and peaceful residents. Very low maintenance building means big savings in the long run in strata fee. Five parks, two tennis courts are within walking distance, two community centres are within five minutes drive. Worry about the skytrain noise? NOT A SOUND! The building was built with exceptional sound insulation, come and feel it! This is an end and corner unit, east and south facing, two good-sized bedrooms, exceptionally well kept and spotless condition, comes with one parking and one storage locker. Easy to show.

## KEY INFORMATION

MLS® R2682464

Residential Attached

Collingwood

2 Bedrooms

1 Bathroom

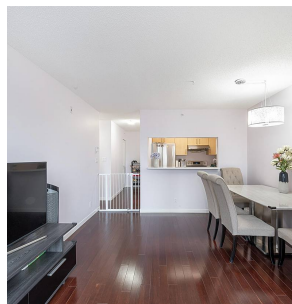
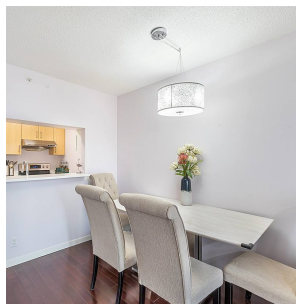
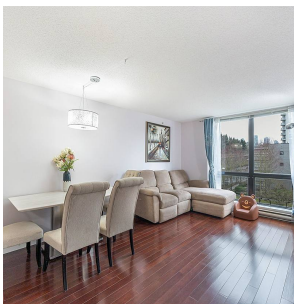
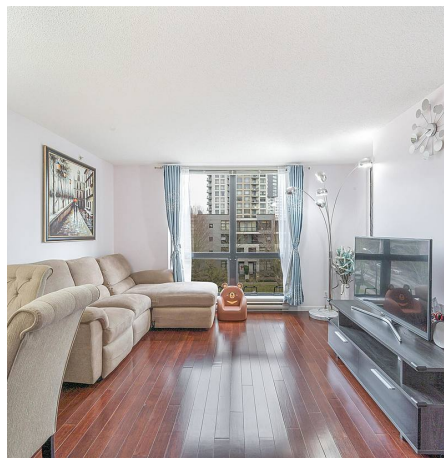
812 SF

\$369.64 Maintenance Fees

## FEATURES

Year Built: 2005

Listed By: Pacific Evergreen Realty Ltd.



rennie