

916 Lee Street, New Westminster

\$1,375,000



Great mountain view from front of this New West Heights home on 55' x 100' corner lot with lane access. Main floor has oak hardwood floors, spacious living/dining area with gas fireplace. Kitchen with Gas range. 3 bedrooms and mudroom leading out to covered patio overlooking level fenced yard with 2 car parking pad. (once a carport) and Sunny South West exposure. Very suiteable basement with high ceilings has gas fireplace in large recroom, bedroom, full bathroom. laundry, workshop and plenty of storage. Upgraded furnace, double vinyl windows, 11 year old roof, exterior painted 2 years ago. Low maintenance front yard. Walk to schools, Crest shopping center and transportation.

KEY INFORMATION

MLS® R2682582

Residential Detached

The Heights

4 Bedrooms

2 Bathrooms

2,605 SF

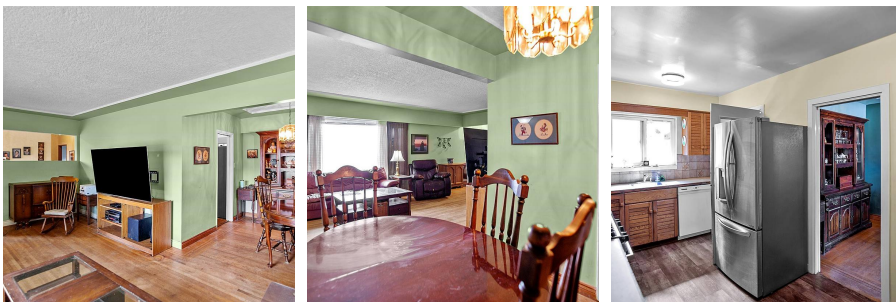
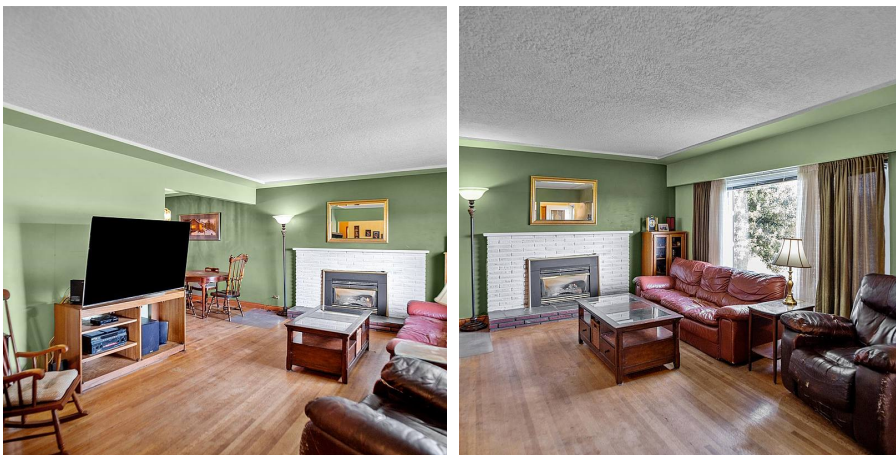
5,500 SF Lot

FEATURES

Year Built: 1956

Views: Mountains & Bridge

Listed By: Sutton Group-West Coast Realty



rennie