

339 32830 George Ferguson Way, Abbotsford

\$529,900



Renovated 3 bedroom 2 bathroom corner apartment, all new laminate flooring throughout, brand new kitchen cabinets and counters, new plumbing and lighting fixtures, baseboards. New kitchen appliance package and updated gas fireplace. Corner unit facing east, centrally located walking distance to shopping, parks, restaurants, and grocery stores. Rentals allowed, no dogs. In-suite Laundry

KEY INFORMATION

MLS® R2682261

Residential Attached

Central Abbotsford

3 Bedrooms

2 Bathrooms

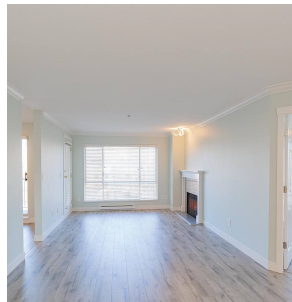
1,291 SF

\$508.89 Maintenance Fees

FEATURES

Year Built: 1992

Listed By: Sutton Group-West Coast Realty (Abbotsford)



rennie