

204 5450 Empire Drive, Burnaby

\$419,900



Very clean and spacious 1 bedroom, 1 bathroom END UNIT centrally located in Capitol Hill! Spacious Living/ dining room with laminate floors and sliding door leading to a private and quiet west facing balcony with city views! In-suite storage, secured parking, storage locker and shared laundry. Heat & hot water included in maintenance fee. Close proximity to walking trails, parks, golf course, recreation centre, and all the shops and restaurants that East Hastings has to offer. Direct transit to Skytrain SFU, Downtown and just a short drive to HWY 1. Pets are OK 2 total, max of 1 small dog.

KEY INFORMATION

MLS® R2682677

Residential Attached

Capitol Hill

1 Bedroom

1 Bathroom

646 SF

\$328.75 Maintenance Fees

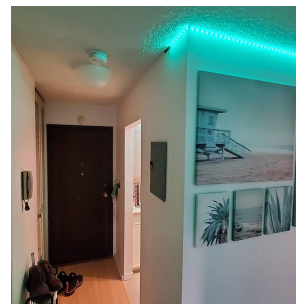
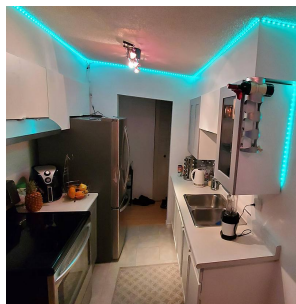


FEATURES

Year Built: 1974

Views: CITY

Listed By: One Percent Realty Ltd.



rennie