

10138 Imperial Street, Chilliwack

\$1,880,000



ONE OF A KIND & extremely RARE 4,000+ sq ft Rancher w/ basement backing GOLF COURSE and green-space! Nearly a 1/2 ACRE of secluded PRIVACY and serene living, this is the lifestyle you've been after! Stunning & extensive renovations throughout the home including High Efficiency Furnace, HW tank, updated plumbing, flooring, light fixtures & so much more! QUIET executive cul-de-sac in one of Chilliwack's premier neighbourhoods, 'LITTLE MOUNTAIN'. Basement space has separate entry with wet bar (Suite potential!) and lot is large enough to build a shop if needed! These options are few and far between, don't miss out on this opportunity to secure your dream property!

KEY INFORMATION

MLS® R2682714

Residential Detached

Chilliwack

3 Bedrooms

3 Bathrooms

4,008 SF

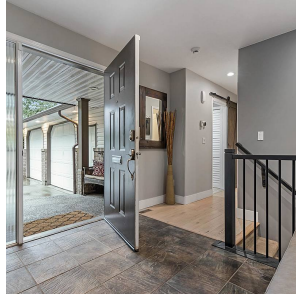
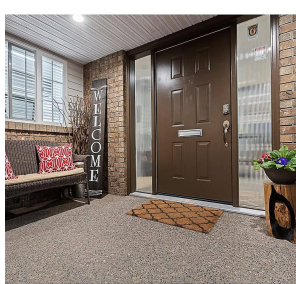
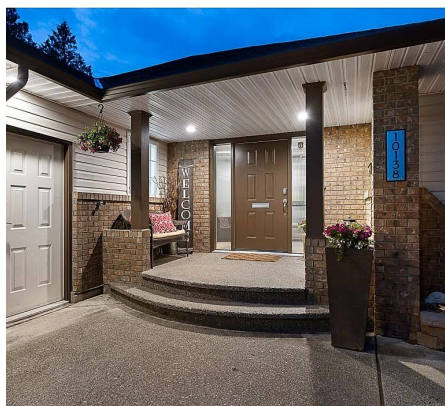
21,519 SF Lot

FEATURES

Year Built: 1994

Views: Mountain & Golf Course

Listed By: Century 21 Creekside Realty



rennie