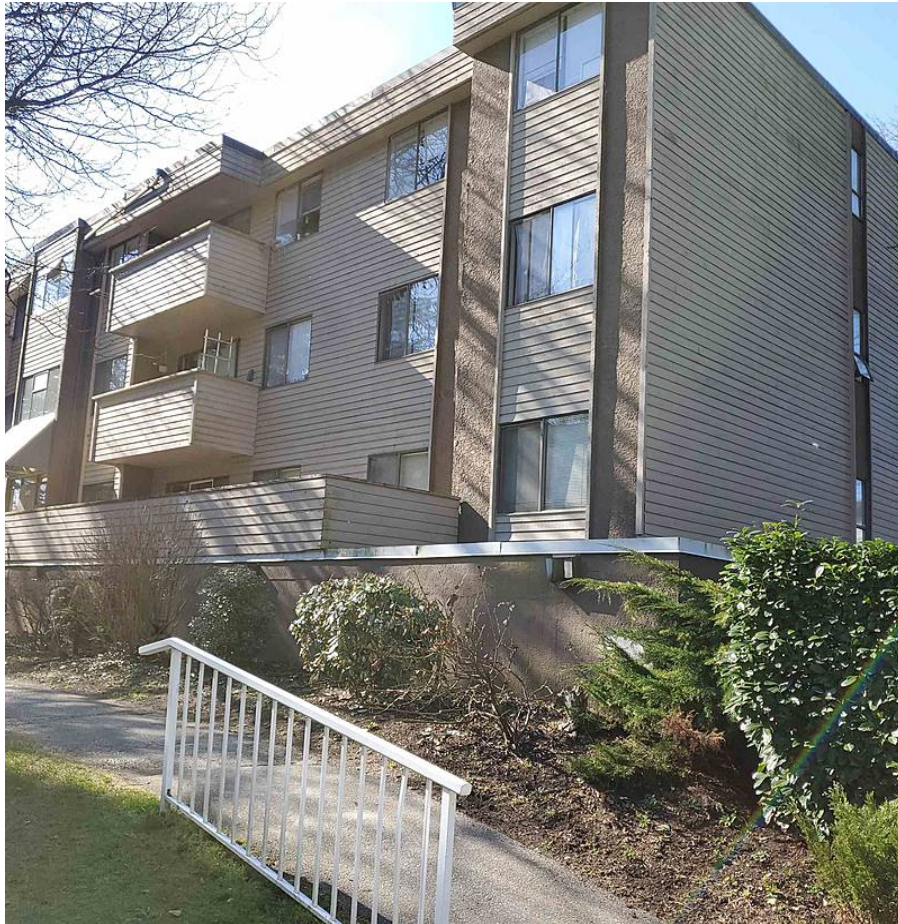


24 2441 Kelly Avenue, Port Coquitlam

\$459,000



**** INVESTOR ALERT ** HUGE 3 BR**
Affordable Condo in Central Port Coquitlam,
Steps to all levels of Schools, Shopping, Parks and
buses. Close to Superstore, Coquitlam mall,
Coquitlam Skytrain and Near Hwy 1 & lauged
Hwy. Large unit with spacious 1,092 sq ft and
includes access to an indoor swimming pool, jetted
hot tub and Sauna. PETS and *RENTALS*
ALLOWED. - Dont wait book your appointment
now!

KEY INFORMATION

MLS® R2682640

Residential Attached

Central Port Coquitlam

3 Bedrooms

1 Bathroom

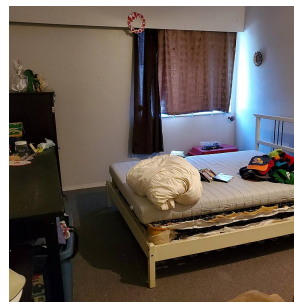
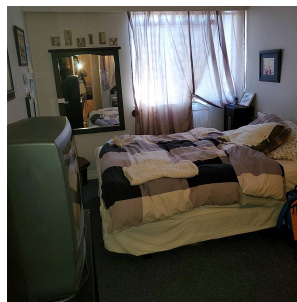
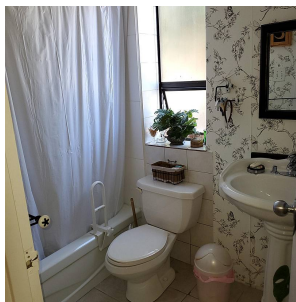
1,092 SF

\$503.75 Maintenance Fees

FEATURES

Year Built: 1974

Listed By: Team 3000 Realty Ltd.



rennie