

108 2688 Vine Street, Vancouver

\$1,399,900



"The Treo" at Arbutus Walk. This amazing south facing corner unit, 2 level townhouse with 2 bedroom + den, 3 bathroom features open floor plan on main floor with a spacious living and dining area with gas fireplace, 9' high ceiling, lots of in-suite storage. Upstairs with 2 bedrooms + den (could be a 3rd bedroom) and 2 baths. Massive patio perfect for entertaining guests and with views of the lush greenway, surrounded by trees. 2 parking stalls 26 & 27. Located across the street from Connaught park and close to coveted schools. Steps from IGA, London Drugs, Kits Community Centre, cafes, restaurants, medical offices and transit.

KEY INFORMATION

MLS® R2682713

Residential Attached

Kitsilano

2 Bedrooms

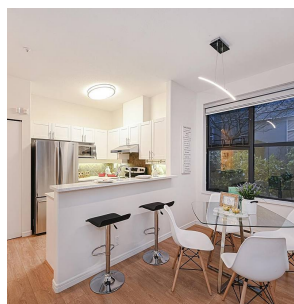
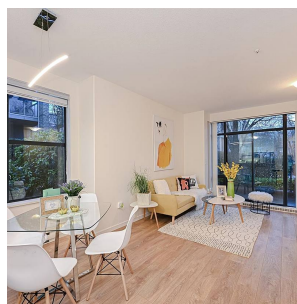
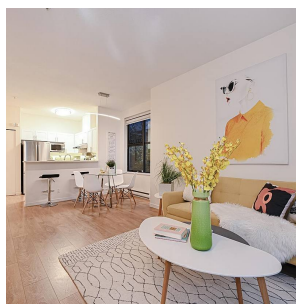
3 Bathrooms

1,067 SF

FEATURES

Year Built: 1998

Listed By: Royal Pacific Realty Corp.



rennie