

# 16 46210 Margaret Avenue, Chilliwack

\$239,800



Beautiful, bright updated wonderful unit on the 3rd floor w/BREATHTAKING mountain views facing out to the south-east. Nice patio to relax and unwind while taking in the mountain views. This 2 bedroom, one bath has a large living room for you to enjoy comfortably. Its charm includes updated flooring, kitchen cabinets, counters, backsplash, light fixtures, trim, windows, patio door, and more. Capri Apartments is a well-maintained desirable 50+ building centrally located, close to various shopping, transit, restaurants and all the new 1881 NEW District. Don't let this opportunity pass you by- turn key and all furniture can be included. Give me a call today!

## KEY INFORMATION

MLS® R2682862

Residential Attached

Chilliwack

2 Bedrooms

1 Bathroom

814 SF

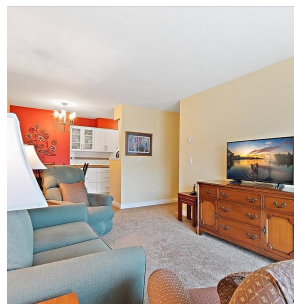
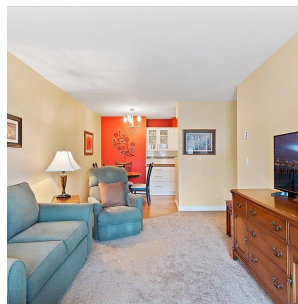
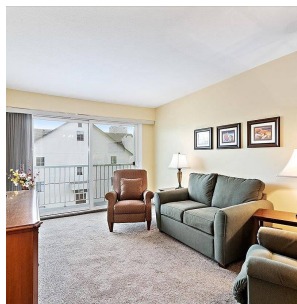
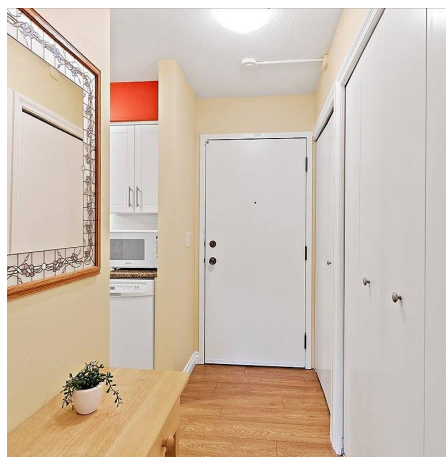
\$269.21 Maintenance Fees

## FEATURES

Year Built: 1984

Views: Mountains

Listed By: HomeLife Advantage Realty Ltd  
(Vedder)



rennie