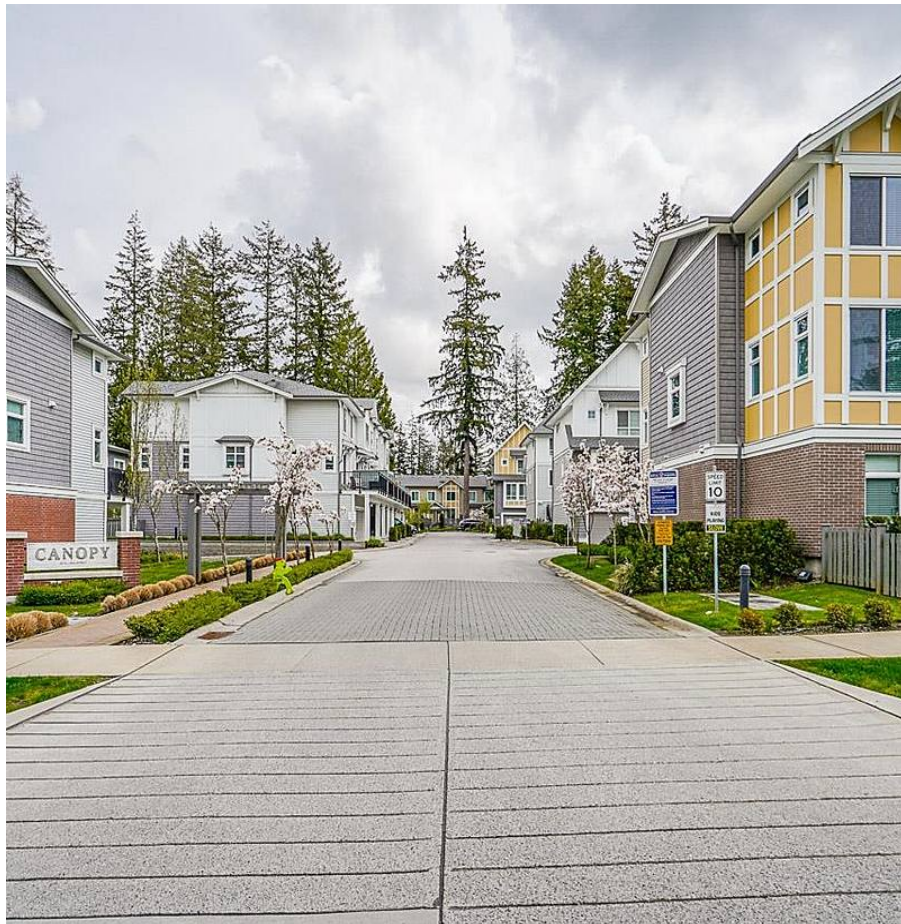


19 9718 161a Street, Surrey

\$849,980



Immaculate 2bd/3bath townhouse is perfect for a young family or those who like to entertain. Walk in & be treated to a good size flex room & bathrm. Main floor boasts an open concept, 9ft ceilings, huge windows, a fully equipped kitchen with a gas stove, s/s appliances & a large deck; perfect for entertaining & BBQ weekends. Upstairs boasts 2 great-sized bdrms including a Mbed with large closet & full ensuite. Located along the Raven's Nest trail, Birch Grove Hatchery Trail & Hawthorn Trail make this the ideal unit for nature lovers and pet owners. Clubhouse w/ gym access & a playground. Minutes away from the mall, recreation, Tynehead Regional Park & Godwin Farm Biodiversity Preserve. Serpentine Heights Elem & North Surrey Pet-friendly strata. Rentals allowed. Lots of street guest parking

KEY INFORMATION

MLS® R2682546

Residential Attached

Fleetwood Tynehead

2 Bedrooms

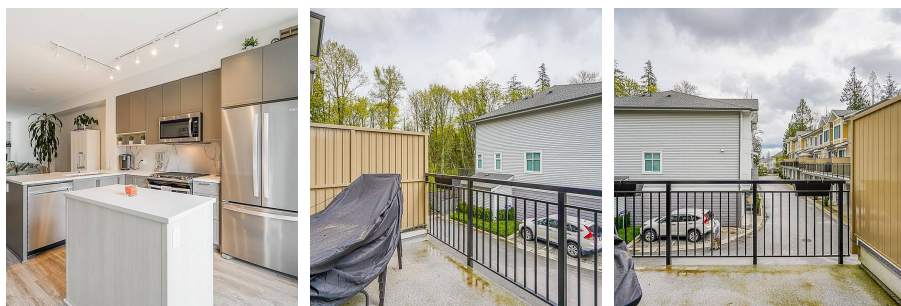
3 Bathrooms

1,244 SF

FEATURES

Year Built: 2019

Listed By: Sutton Group-West Coast Realty
(Surrey/120)



rennie